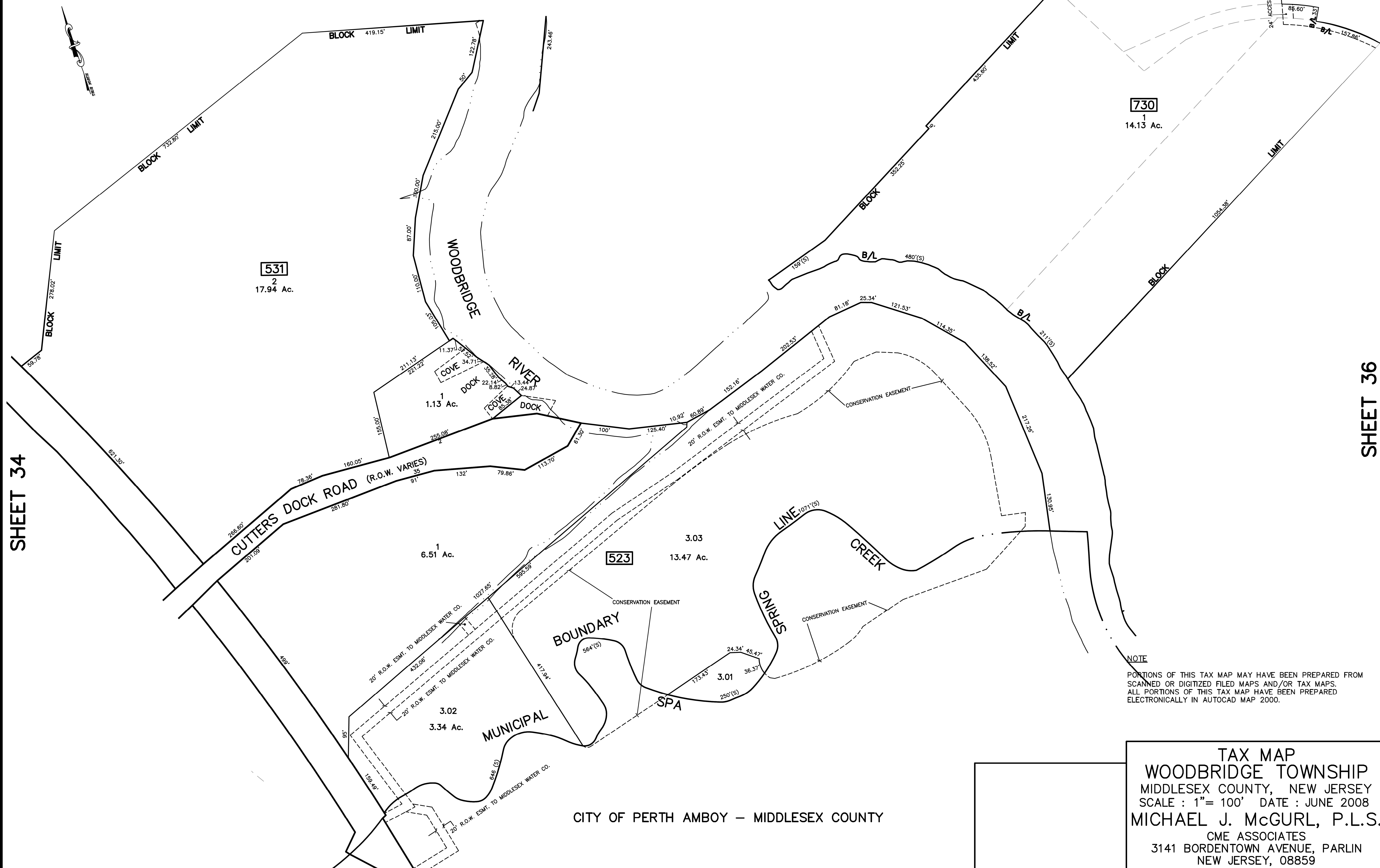


12/21/12	Tox. Map Revisions	SB
12/29/10	Added Conservation Easements	JSE
REVISED	DESCRIPTION	REV. BY
		CHK.

SHEET 45

SHEET 46



SHEET 34

SHEET 36

NOTE
 PORTIONS OF THIS TAX MAP MAY HAVE BEEN PREPARED FROM
 SCANNED OR DIGITIZED FILED MAPS AND/OR TAX MAPS.
 ALL PORTIONS OF THIS TAX MAP HAVE BEEN PREPARED
 ELECTRONICALLY IN AUTOCAD MAP 2000.

CITY OF PERTH AMBOY – MIDDLESEX COUNTY

TAX MAP
WOODBIDGE TOWNSHIP
 MIDDLESEX COUNTY, NEW JERSEY
 SCALE : 1"= 100' DATE : JUNE 2008
MICHAEL J. MCGURL, P.L.S.
 CME ASSOCIATES
 3141 BORDENTOWN AVENUE, PARLIN
 NEW JERSEY, 08859