

12/31/13	Top Map Revisions	SB
12/31/12	Top Map Revisions	SB
10/13/10	Various Easements-Bk 182.03, lot 1.01, 2	JSE
10/12/10	Easement, Vacations-Bk 182.03, lot 1.01, 2	JSE
REMOVED	DESCRIPTION	REV. BY
		CHK.

SHEET 25

SHEET 32

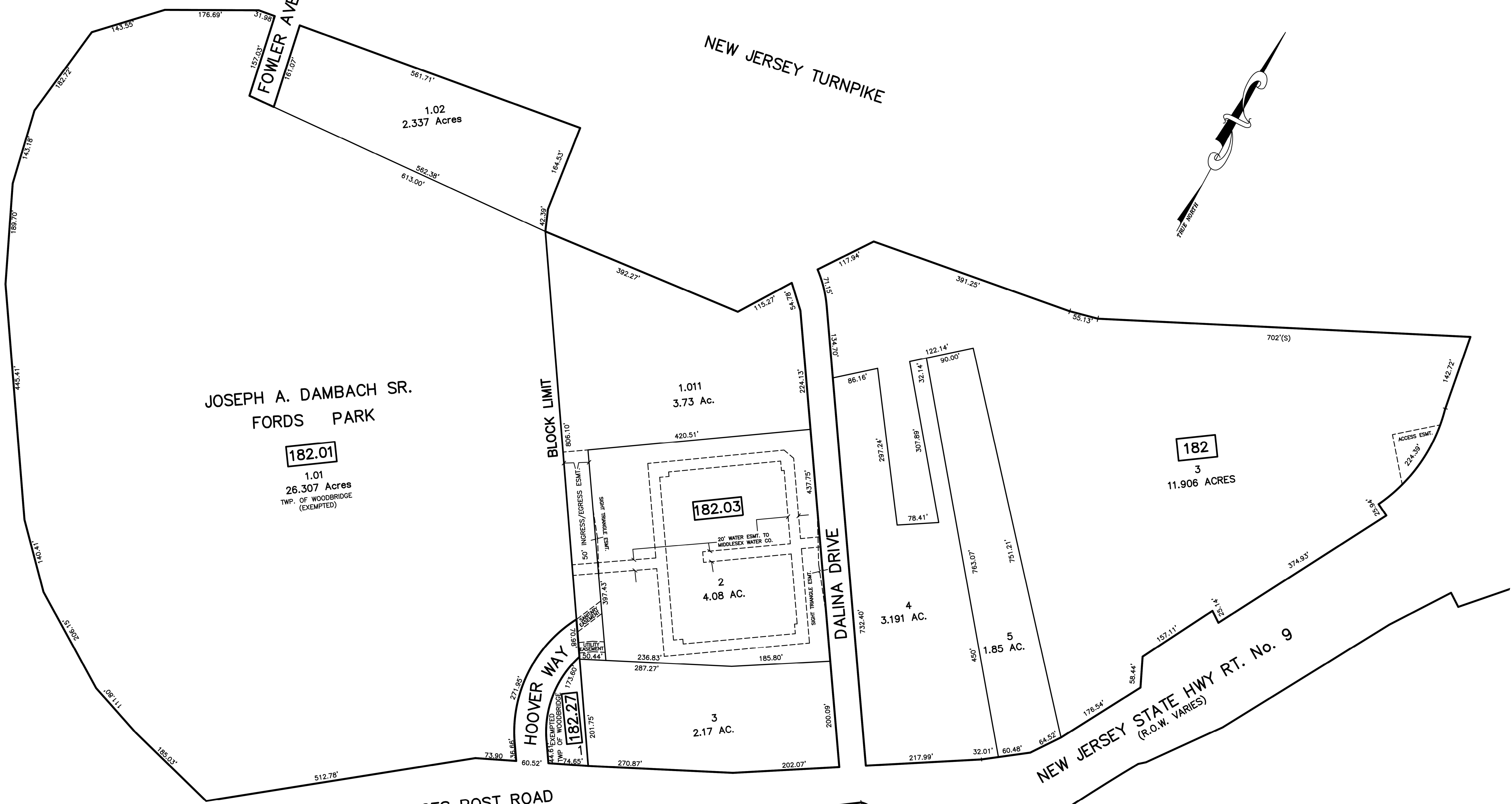
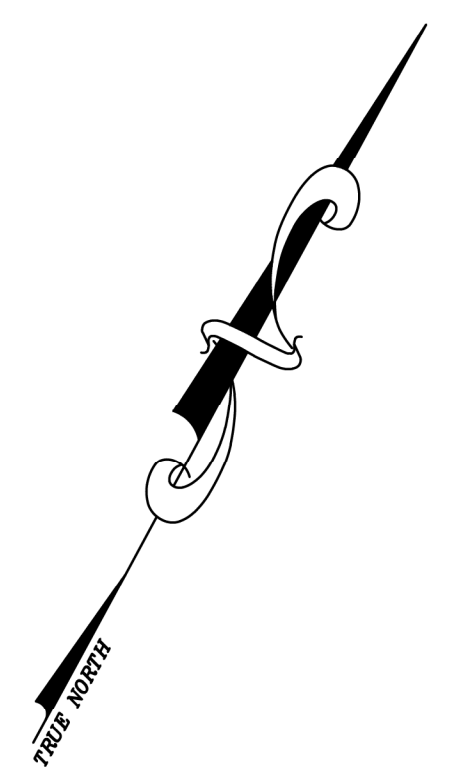
SHEET 20

SHEET 26

GARDEN STATE PARKWAY

JOSEPH A. DAMBACH SR.
FORDS PARK

NEW JERSEY TURNPIKE



KING GEORGES POST ROAD

DALINA DRIVE

NEW JERSEY STATE HWY RT. No. 9
(R.O.W. VARIES)

NEW JERSEY STATE HIGHWAY RT. No. 184

NOTE
 PORTIONS OF THIS TAX MAP MAY HAVE BEEN PREPARED FROM
 SCANNED OR DIGITIZED FILED MAPS AND/OR TAX MAPS.
 ALL PORTIONS OF THIS TAX MAP HAVE BEEN PREPARED
 ELECTRONICALLY IN AUTOCAD MAP 2000.

SHEET 16

SHEET 22

TAX MAP
WOODBIDGE TOWNSHIP
 MIDDLESEX COUNTY, NEW JERSEY
 SCALE : 1"= 100' DATE : JUNE 2008
MICHAEL J. McGURL, P.L.S.
 CME ASSOCIATES
 3141 BORDENTOWN AVENUE, PARLIN
 NEW JERSEY, 08859