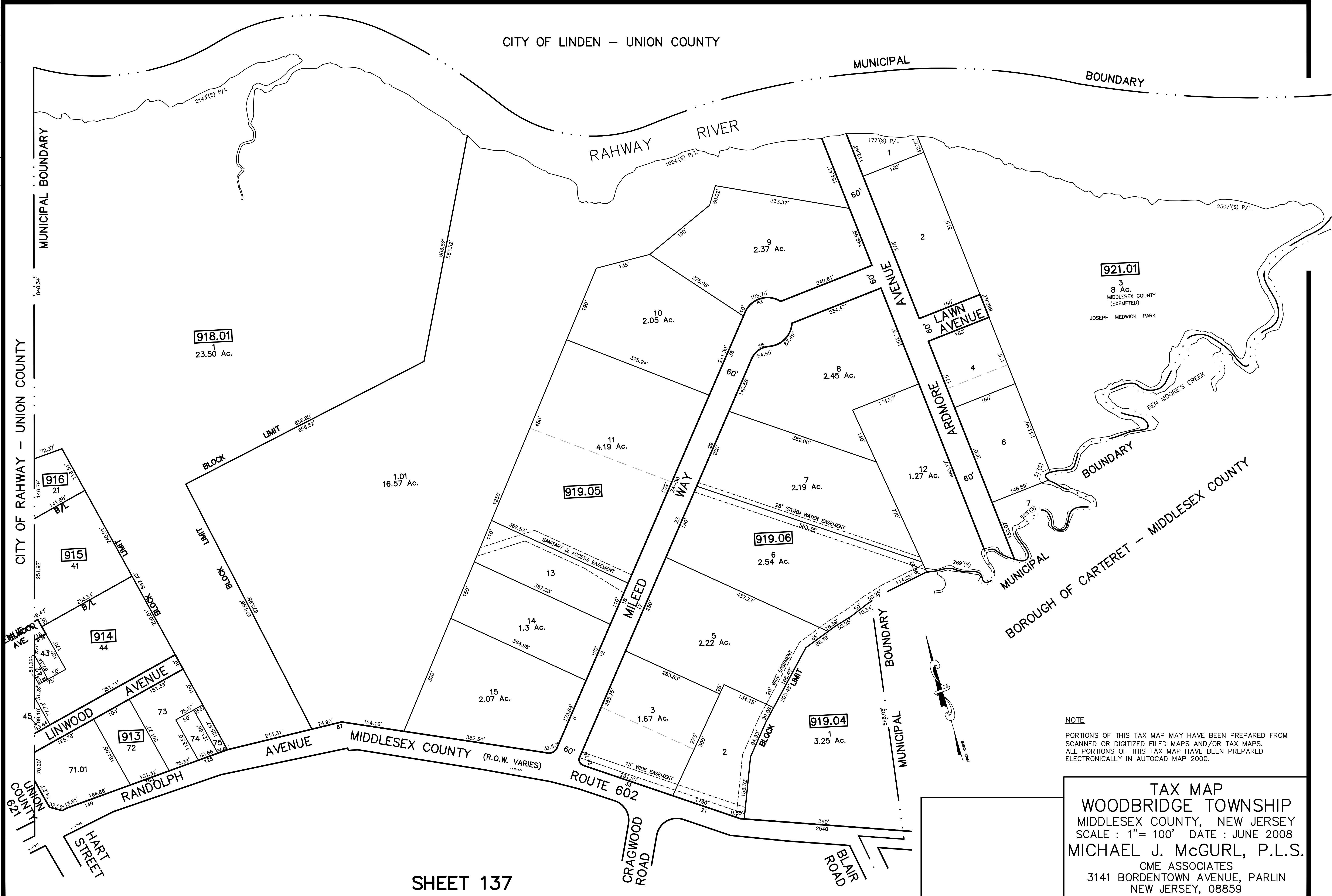


12/31/13	Tax Map Revisions	SR
12/31/12	Tax Map Revisions	SR
09/10/10	San./Access Emt.-Block 919.05, lot 13, 17	JSE
REVISED	DESCRIPTION	REV. BY
		CHK.



921.01
 3
 8 Ac.
 MIDDLESEX COUNTY
 (EXEMPTED)
 JOSEPH MEDWICK PARK

NOTE
 PORTIONS OF THIS TAX MAP MAY HAVE BEEN PREPARED FROM
 SCANNED OR DIGITIZED FILED MAPS AND/OR TAX MAPS.
 ALL PORTIONS OF THIS TAX MAP HAVE BEEN PREPARED
 ELECTRONICALLY IN AUTOCAD MAP 2000.

TAX MAP
WOODBIDGE TOWNSHIP
 MIDDLESEX COUNTY, NEW JERSEY
 SCALE : 1" = 100' DATE : JUNE 2008
MICHAEL J. MCGURL, P.L.S.
 CME ASSOCIATES
 3141 BORDENTOWN AVENUE, PARLIN
 NEW JERSEY, 08859