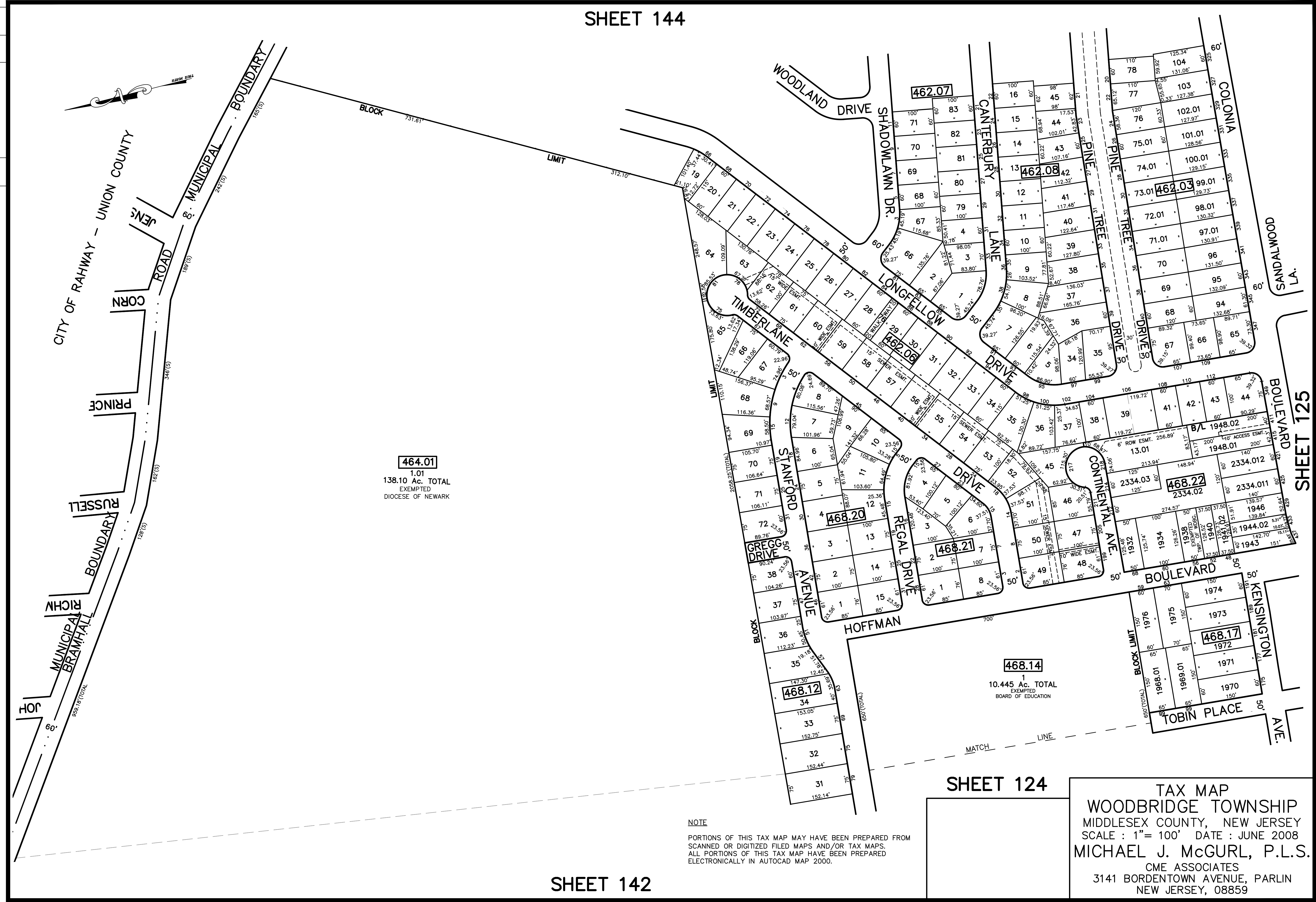


SHEET 144

12/31/13 Tax Map Revisions	REVISION	DESCRIPTION
SB	REV. BY	CHK.



**464.01**  
 1.01  
 138.10 Ac. TOTAL  
 EXEMPTED  
 DIOCESE OF NEWARK

**468.14**  
 1  
 10.445 Ac. TOTAL  
 EXEMPTED  
 BOARD OF EDUCATION

**NOTE**  
 PORTIONS OF THIS TAX MAP MAY HAVE BEEN PREPARED FROM  
 SCANNED OR DIGITIZED FILED MAPS AND/OR TAX MAPS.  
 ALL PORTIONS OF THIS TAX MAP HAVE BEEN PREPARED  
 ELECTRONICALLY IN AUTOCAD MAP 2000.

SHEET 124

**TAX MAP**  
**WOODBIDGE TOWNSHIP**  
 MIDDLESEX COUNTY, NEW JERSEY  
 SCALE : 1"= 100' DATE : JUNE 2008  
**MICHAEL J. McGURL, P.L.S.**  
 CME ASSOCIATES  
 3141 BORDENTOWN AVENUE, PARLIN  
 NEW JERSEY, 08859

SHEET 142

SHEET 125