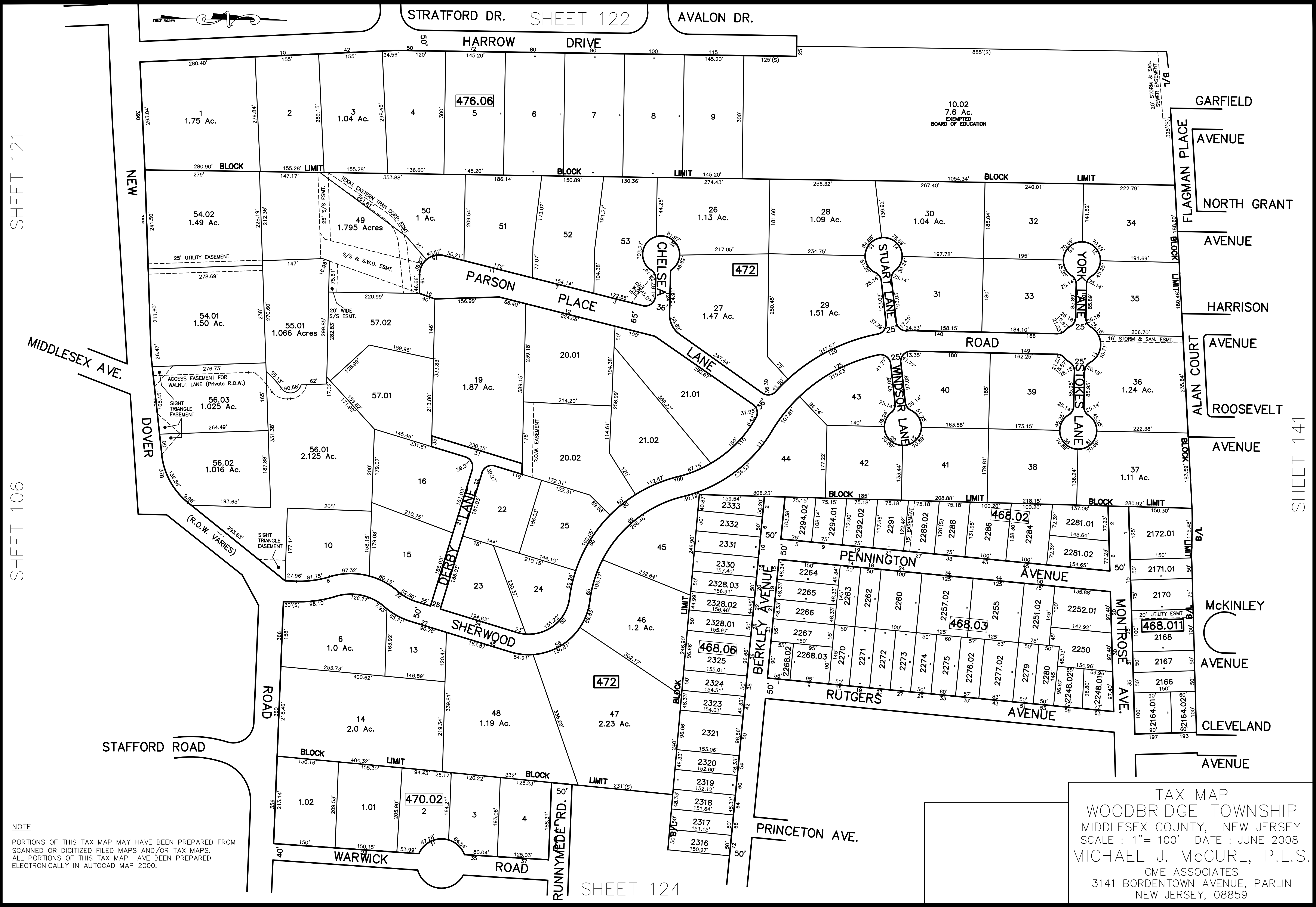


12/31/18	Tax Map Revisions	SR
12/31/16	Tax Map Revisions	SR
12/31/15	Tax Map Revisions	SR
REVISED	DESCRIPTION	REV. BY
		CHK.



SHEET 121

SHEET 106

SHEET 141

STRATFORD DR. SHEET 122

AVALON DR.

NOTE
 PORTIONS OF THIS TAX MAP MAY HAVE BEEN PREPARED FROM
 SCANNED OR DIGITIZED FILED MAPS AND/OR TAX MAPS.
 ALL PORTIONS OF THIS TAX MAP HAVE BEEN PREPARED
 ELECTRONICALLY IN AUTOCAD MAP 2000.

TAX MAP
 WOODBRIDGE TOWNSHIP
 MIDDLESEX COUNTY, NEW JERSEY
 SCALE : 1" = 100' DATE : JUNE 2008
 MICHAEL J. McGURL, P.L.S.
 CME ASSOCIATES
 3141 BORDENTOWN AVENUE, PARLIN
 NEW JERSEY, 08859

SHEET 124