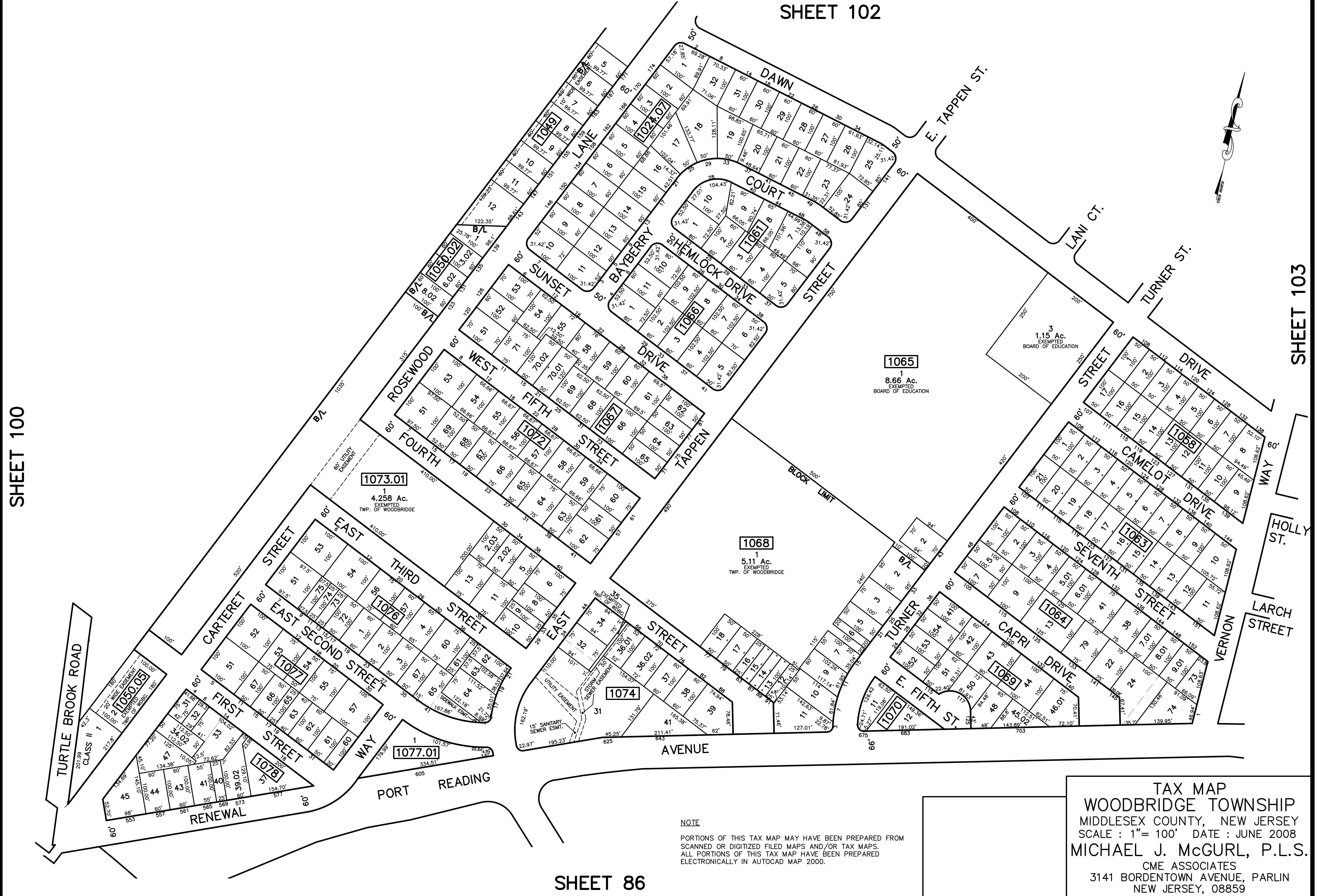


12/31/16	Tax Map Revisions	SB
12/31/15	Tax Map Revisions	SB
12/31/12	Tax Map Revisions	SB
11/02/11	BL 1073.01 L 2&4-Combine to create L 2.01 SB	SB
REVISED	DESCRIPTION	REV. BY
		CHK.



SHEET 100

SHEET 102

SHEET 103

SHEET 86

NOTE
 PORTIONS OF THIS TAX MAP MAY HAVE BEEN PREPARED FROM
 SCANNED OR DIGITIZED FILED MAPS AND/OR TAX MAPS.
 ALL PORTIONS OF THIS TAX MAP HAVE BEEN PREPARED
 ELECTRONICALLY IN AUTOCAD MAP 2000.

TAX MAP
 WOODBRIDGE TOWNSHIP
 MIDDLESEX COUNTY, NEW JERSEY
 SCALE : 1"= 100' DATE : JUNE 2008
 MICHAEL J. McGURL, P.L.S.
 CME ASSOCIATES
 3141 BORDENTOWN AVENUE, PARLIN
 NEW JERSEY, 08859