

12/31/15	Tax Map Revisions	SR	REV. BY	CHK.
12/31/13	Tax Map Revisions	SR		
	DESCRIPTION			

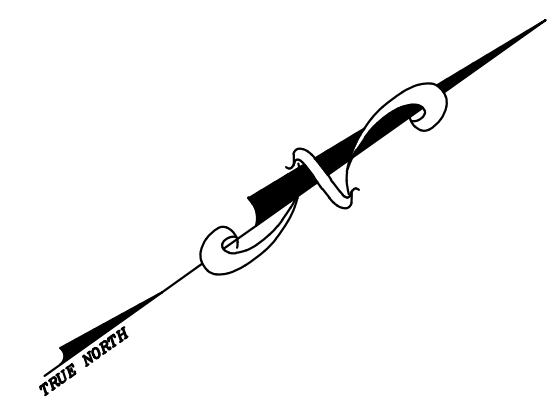
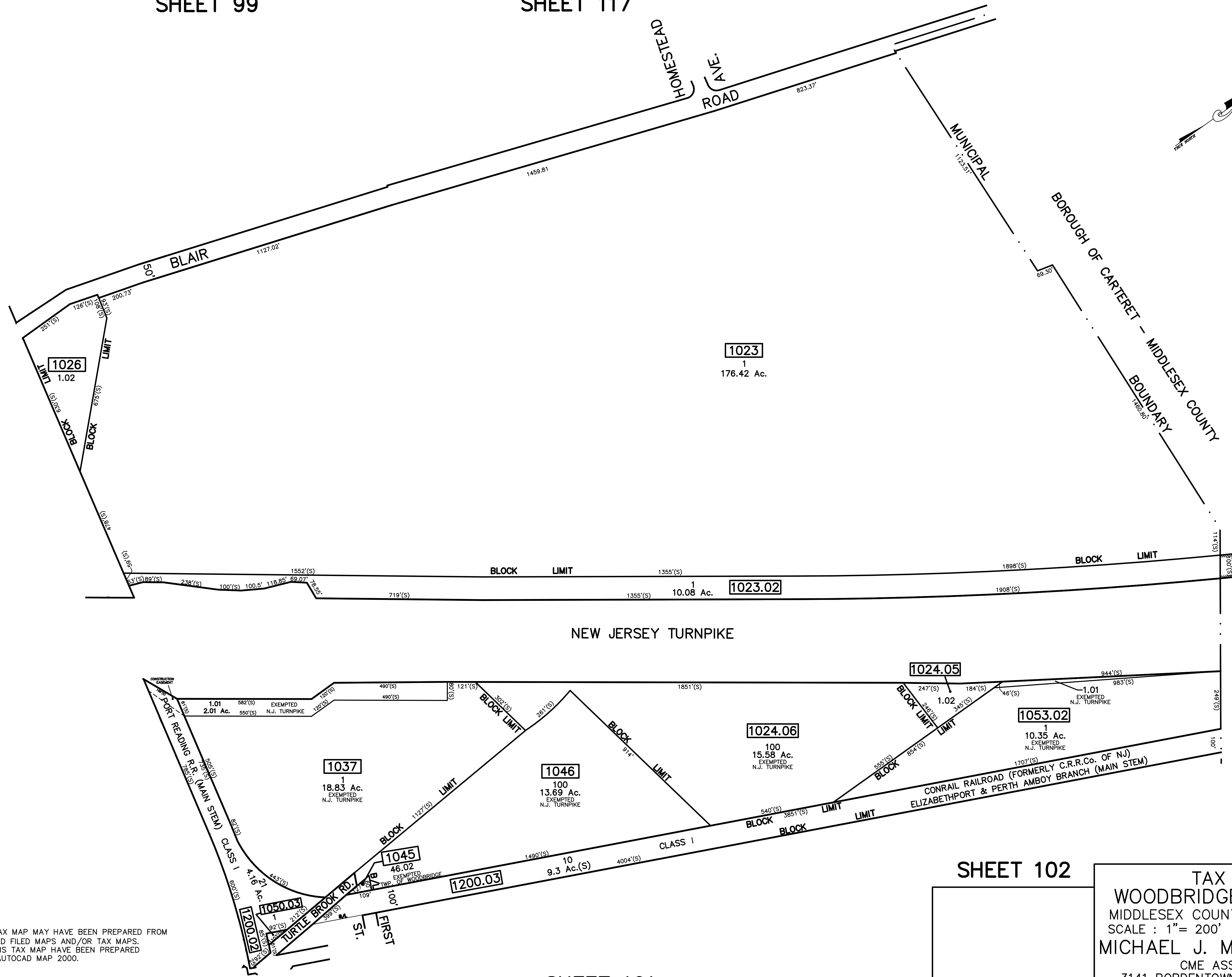
SHEET 99

SHEET 117

SHEET 84

SHEET 85

NOTE
 PORTIONS OF THIS TAX MAP MAY HAVE BEEN PREPARED FROM
 SCANNED OR DIGITIZED FILED MAPS AND/OR TAX MAPS.
 ALL PORTIONS OF THIS TAX MAP HAVE BEEN PREPARED
 ELECTRONICALLY IN AUTOCAD MAP 2000.



SHEET 102

SHEET 101

TAX MAP
WOODBIDGE TOWNSHIP
 MIDDLESEX COUNTY, NEW JERSEY
 SCALE : 1"= 200' DATE : JUNE 2008
MICHAEL J. McGURL, P.L.S.
 CME ASSOCIATES
 3141 BORDTOWN AVENUE, PARLIN
 NEW JERSEY, 08859