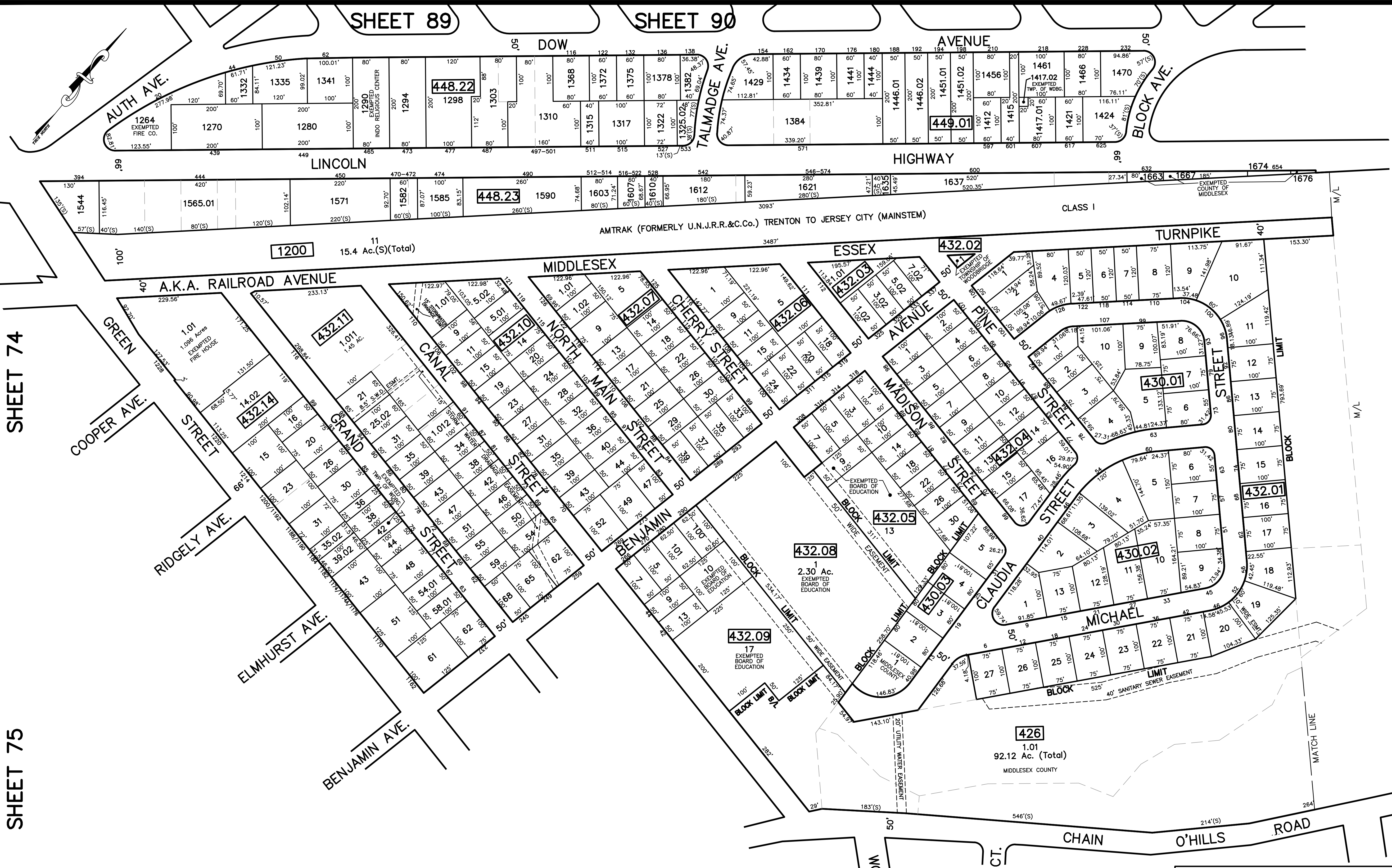


12/31/16	Tox Map Revisions	SR
12/31/14	Tox Map Revisions	SR
12/31/12	Tox Map Revisions	SR
11/02/11	Subdivision-Blk. 432.11, lot 1, Change to lot 1.01	SR
09/08/10	Subdivision-Blk. 432.14, lot 1.01	SR
09/08/10	R.O.W. Taking-Blk. 432.14, lot 1.01	SR
	REVISION DESCRIPTION	
	REV. BY	CHK.



SHEET 74

SHEET 75

SHEET 93

NOTE
 PORTIONS OF THIS TAX MAP MAY HAVE BEEN PREPARED FROM
 SCANNED OR DIGITIZED FILED MAPS AND/OR TAX MAPS.
 ALL PORTIONS OF THIS TAX MAP HAVE BEEN PREPARED
 ELECTRONICALLY IN AUTOCAD MAP 2000.

SHEET 92

TAX MAP
 WOODBRIDGE TOWNSHIP
 MIDDLESEX COUNTY, NEW JERSEY
 SCALE : 1" = 100' DATE : JUNE 2008
 MICHAEL J. McGURL, P.L.S.
 CME ASSOCIATES
 3141 BORDENTOWN AVENUE, PARLIN
 NEW JERSEY, 08859