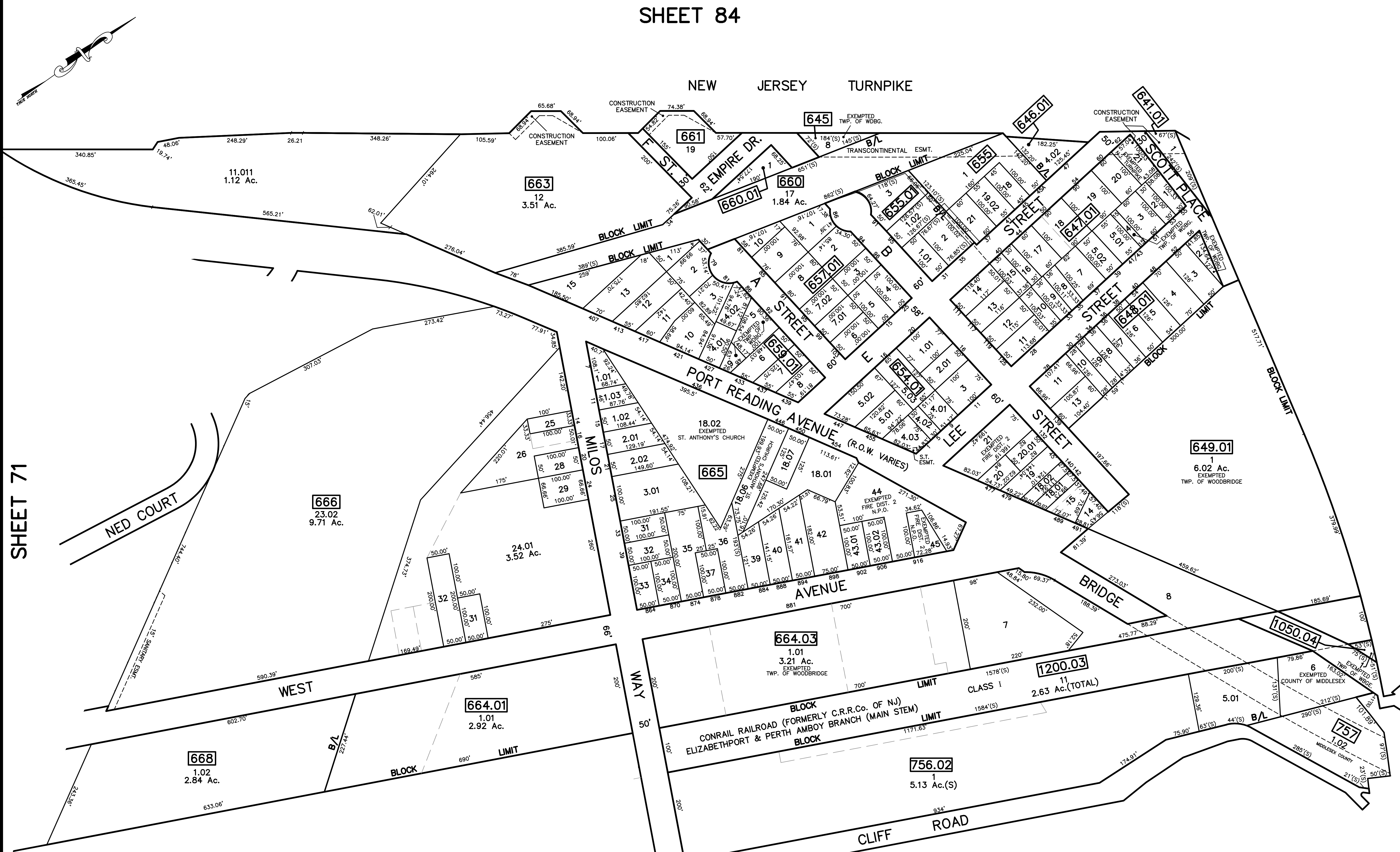


SHEET 84

12/31/20	Top Map Revisions	SB
12/31/19	Top Map Revisions	SB
12/31/14	Top Map Revisions	SB
12/31/13	Top Map Revisions	SB
12/31/12	Top Map Revisions	SB
06/06/11	Block 654.01 Lot 4-Subdivision and Emt.	SB
10/13/10	R.O.W. Avallion-Bk 757, lot 1.02	JSE
09/03/10	Corrections-Bk 665, lot 18.01	JSE
REVISED	DESCRIPTION	REV. BY
		CHK.



SHEET 71

SHEET 100

NOTE
 PORTIONS OF THIS TAX MAP MAY HAVE BEEN PREPARED FROM
 SCANNED OR DIGITIZED FILED MAPS AND/OR TAX MAPS.
 ALL PORTIONS OF THIS TAX MAP HAVE BEEN PREPARED
 ELECTRONICALLY IN AUTOCAD MAP 2000.

SHEET 72

SHEET 86

TAX MAP
 WOODBRIDGE TOWNSHIP
 MIDDLESEX COUNTY, NEW JERSEY
 SCALE : 1"= 100' DATE : JUNE 2008
 MICHAEL J. McGURL, P.L.S.
 CME ASSOCIATES
 3141 BORDENTOWN AVENUE, PARLIN
 NEW JERSEY, 08859