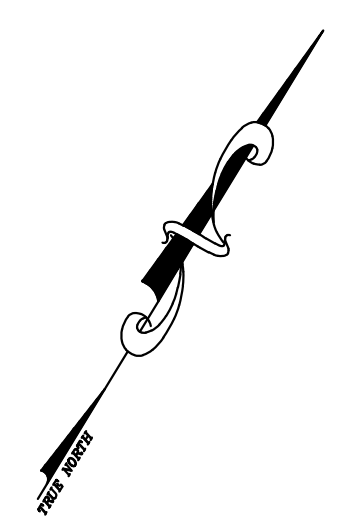


REVISED	DESCRIPTION	REV. BY	CHK.
12/31/12	Tax Map Revisions	SB	
06/17/11	Subdivision-BK 630, Lots 193 & 197	SB	
06/16/11	Subdivision-BK 631, Lots 176	SB	
09/03/10	Subdivision-BK 631, Lots 174	JSE	

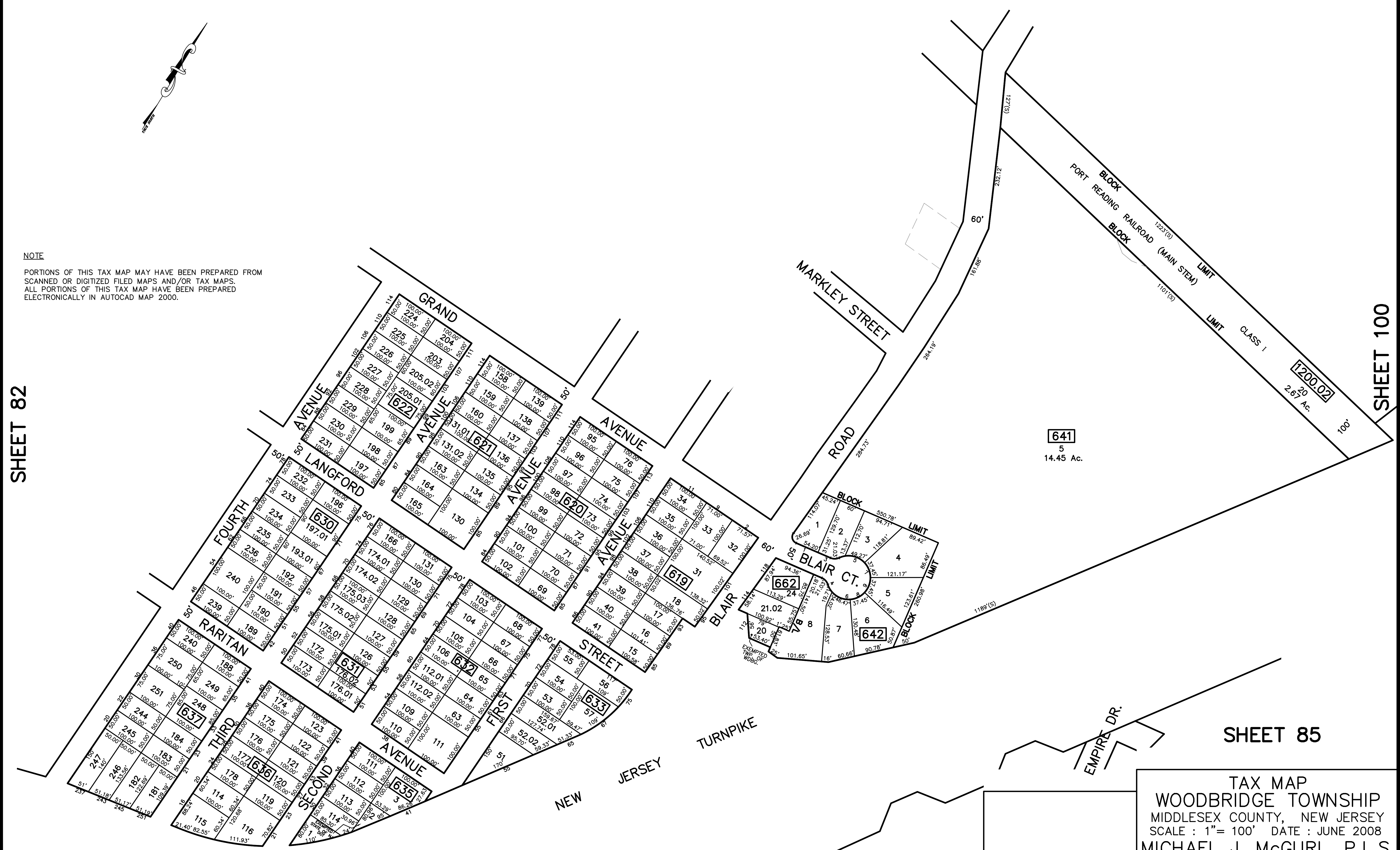


NOTE

PORTIONS OF THIS TAX MAP MAY HAVE BEEN PREPARED FROM
 SCANNED OR DIGITIZED FILED MAPS AND/OR TAX MAPS.
 ALL PORTIONS OF THIS TAX MAP HAVE BEEN PREPARED
 ELECTRONICALLY IN AUTOCAD MAP 2000.

SHEET 82

SHEET 100



TAX MAP
 WOODBRIDGE TOWNSHIP
 MIDDLESEX COUNTY, NEW JERSEY
 SCALE : 1"= 100' DATE : JUNE 2008
 MICHAEL J. McGURL, P.L.S.
 CME ASSOCIATES
 3141 BORDENTOWN AVENUE, PARLIN
 NEW JERSEY, 08859

SHEET 71

SHEET 85