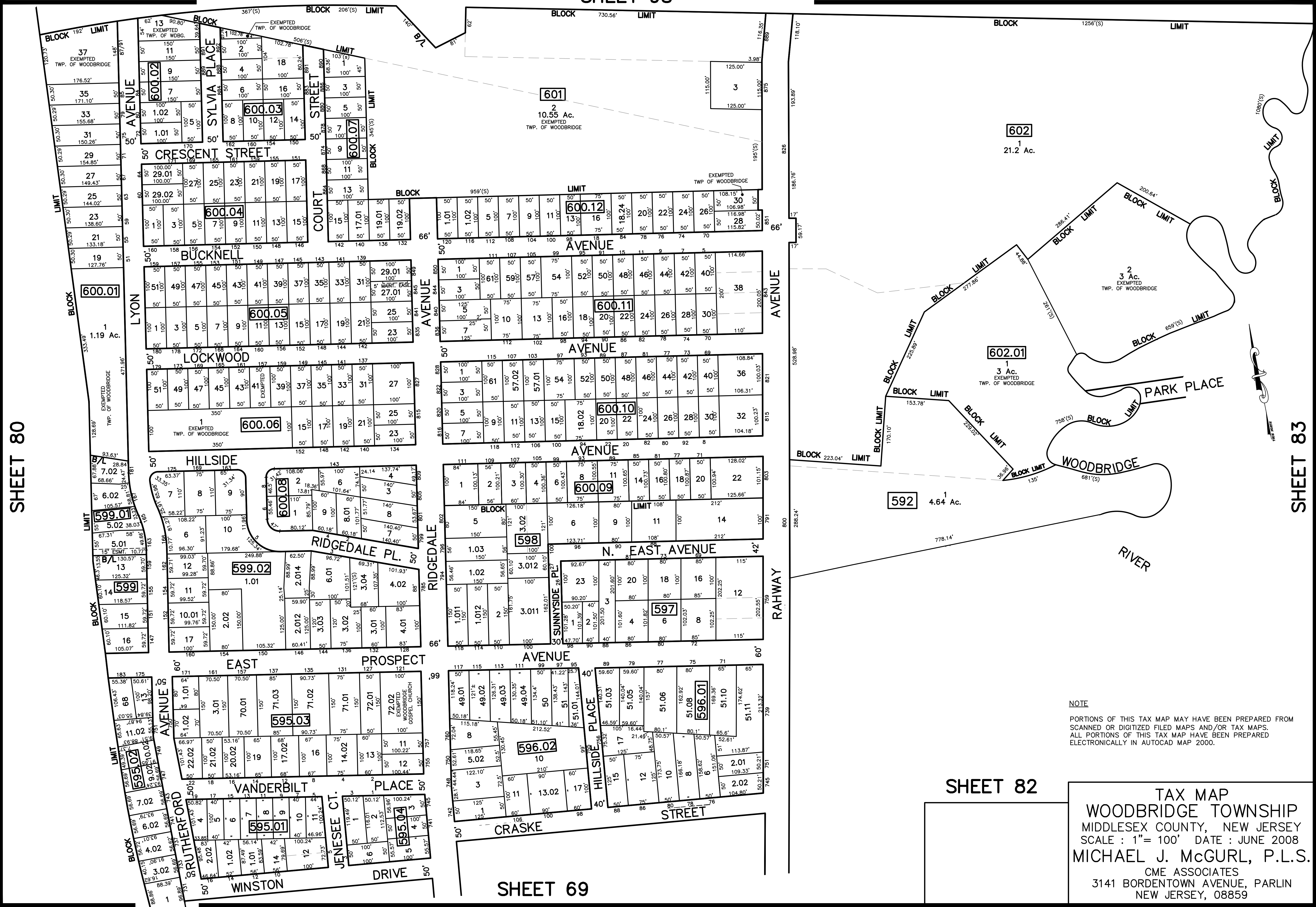


SHEET 98

12/31/14	Tax Map Revisions	SB	CHK.
12/31/13	Tax Map Revisions	SB	
12/31/12	Tax Map Revisions	SB	
12/23/10	Added Conservation Easement	USE	
09/03/10	Subdivision-BK 600.05, lot 27 and 29	USE	
REVISED	DESCRIPTION		
		REV. BY	CHK.



SHEET 80

SHEET 83

NOTE
 PORTIONS OF THIS TAX MAP MAY HAVE BEEN PREPARED FROM
 SCANNED OR DIGITIZED FILED MAPS AND/OR TAX MAPS.
 ALL PORTIONS OF THIS TAX MAP HAVE BEEN PREPARED
 ELECTRONICALLY IN AUTOCAD MAP 2000.

SHEET 82

SHEET 69

TAX MAP
 WOODBRIDGE TOWNSHIP
 MIDDLESEX COUNTY, NEW JERSEY
 SCALE : 1"= 100' DATE : JUNE 2008
 MICHAEL J. McGURL, P.L.S.
 CME ASSOCIATES
 3141 BORDENTOWN AVENUE, PARLIN
 NEW JERSEY, 08859