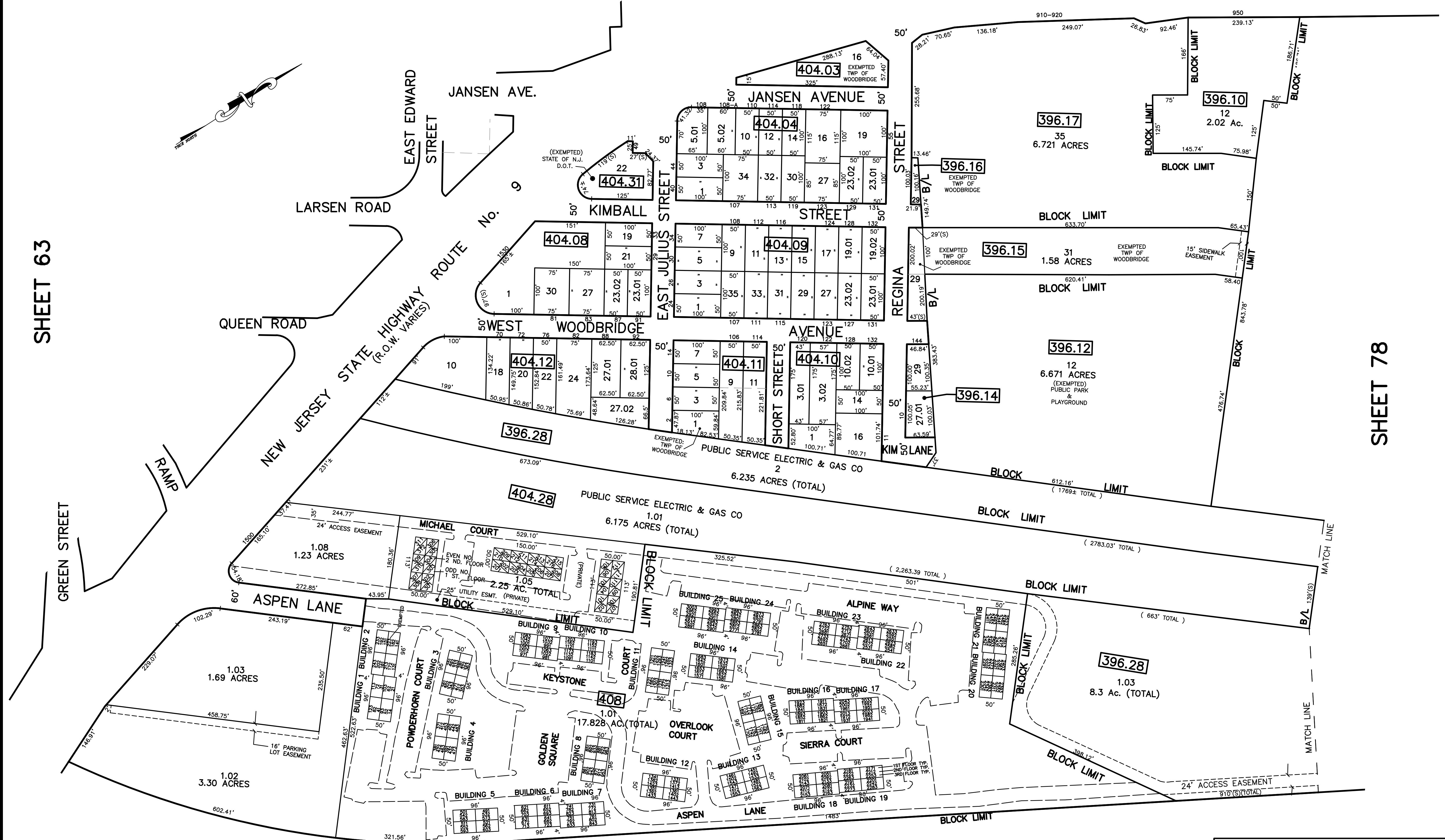


12/23/13	12/23/12	09/21/10	09/16/10	REV. BY	CHK.
SB	SB	JSE	JSE		
Tax Map Revisions Tax Map Revisions Subdivision-Bk 404.08, lots 19 and 21 Corrections-Bk 404.10, lots 1 and 16 REVISED DESCRIPTION REVISIONS					

SHEET 63

SHEET 77

NEW JERSEY STATE HIGHWAY ROUTE No. 25 U.S. 1



SHEET 78

NOTE  
 PORTIONS OF THIS TAX MAP MAY HAVE BEEN PREPARED FROM  
 SCANNED OR DIGITIZED FILED MAPS AND/OR TAX MAPS.  
 ALL PORTIONS OF THIS TAX MAP HAVE BEEN PREPARED  
 ELECTRONICALLY IN AUTOCAD MAP 2000.

SHEET 65

SHEET 66

TAX MAP  
 WOODBRIDGE TOWNSHIP  
 MIDDLESEX COUNTY, NEW JERSEY  
 SCALE : 1"= 100' DATE : JUNE 2008  
 MICHAEL J. McGURL, P.L.S.  
 CME ASSOCIATES  
 3141 BORDENTOWN AVENUE, PARLIN  
 NEW JERSEY, 08859