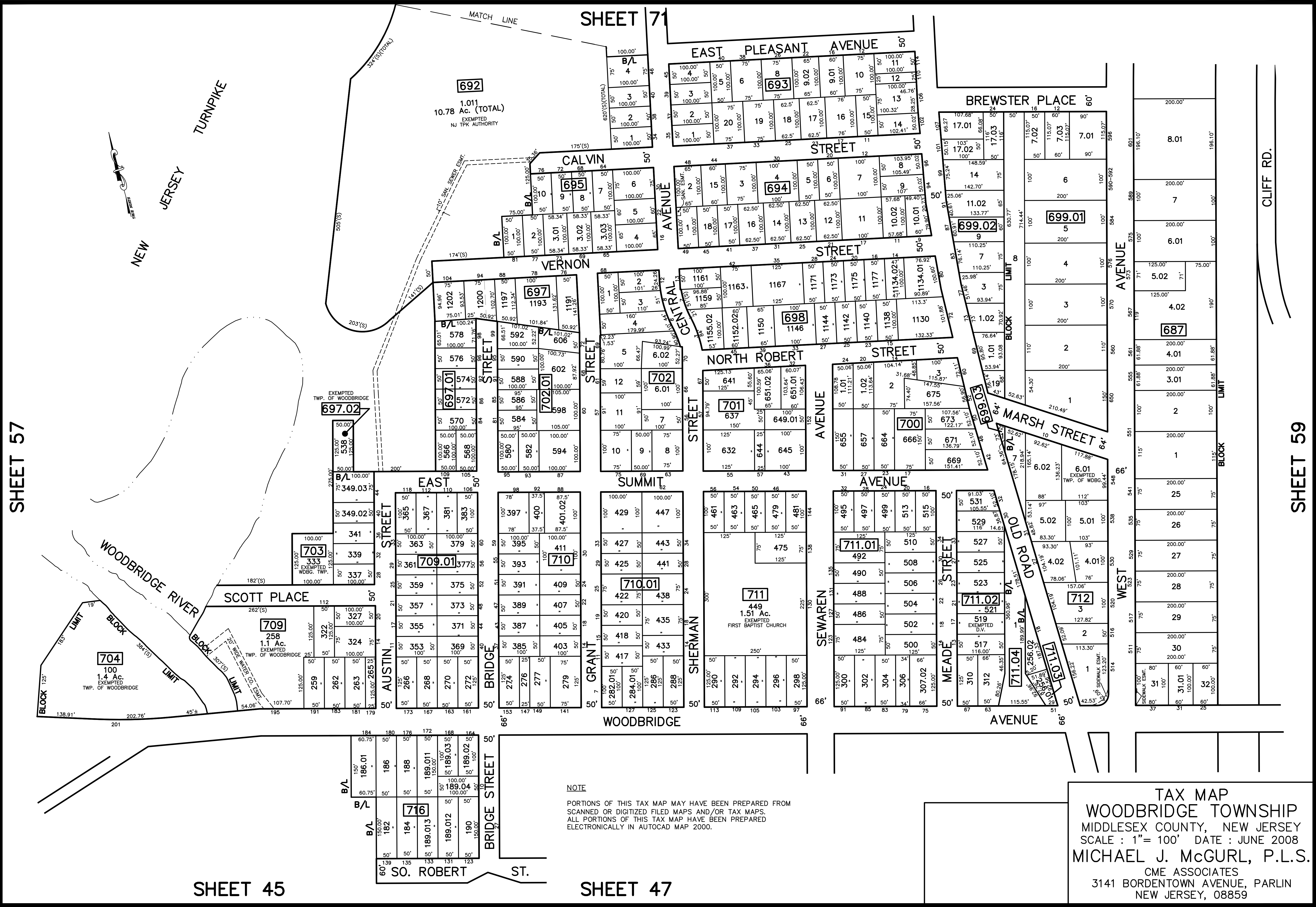


REVISED	DESCRIPTION	REV. BY	CHK.
12/31/12	Tax Map Revisions		
11/02/11	Essements-Bk. 712 L 1 & Bk. 687 L 31	SB	
09/27/10	Subdivision-Bk. 702 Lots 11 and 12	USE	
09/27/10	Subdivision-Bk. 702.01, lot 594, 596, 598	USE	



NOTE
 PORTIONS OF THIS TAX MAP MAY HAVE BEEN PREPARED FROM
 SCANNED OR DIGITIZED FILED MAPS AND/OR TAX MAPS.
 ALL PORTIONS OF THIS TAX MAP HAVE BEEN PREPARED
 ELECTRONICALLY IN AUTOCAD MAP 2000.

TAX MAP
 WOODBRIDGE TOWNSHIP
 MIDDLESEX COUNTY, NEW JERSEY
 SCALE : 1"= 100' DATE : JUNE 2008
 MICHAEL J. McGURL, P.L.S.
 CME ASSOCIATES
 3141 BORDENTOWN AVENUE, PARLIN
 NEW JERSEY, 08859