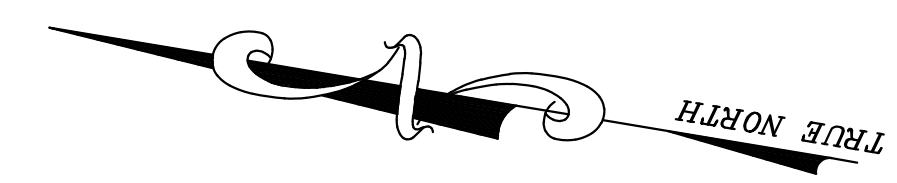


12/31/17	Tax Map Revisions	SB
12/31/15	Tax Map Revisions	SB
12/31/14	Tax Map Revisions	SB
12/31/12	Tax Map Revisions	SB
REVISED	DESCRIPTION	
REV. BY	CHK.	

SHEET 41

SHEET 32

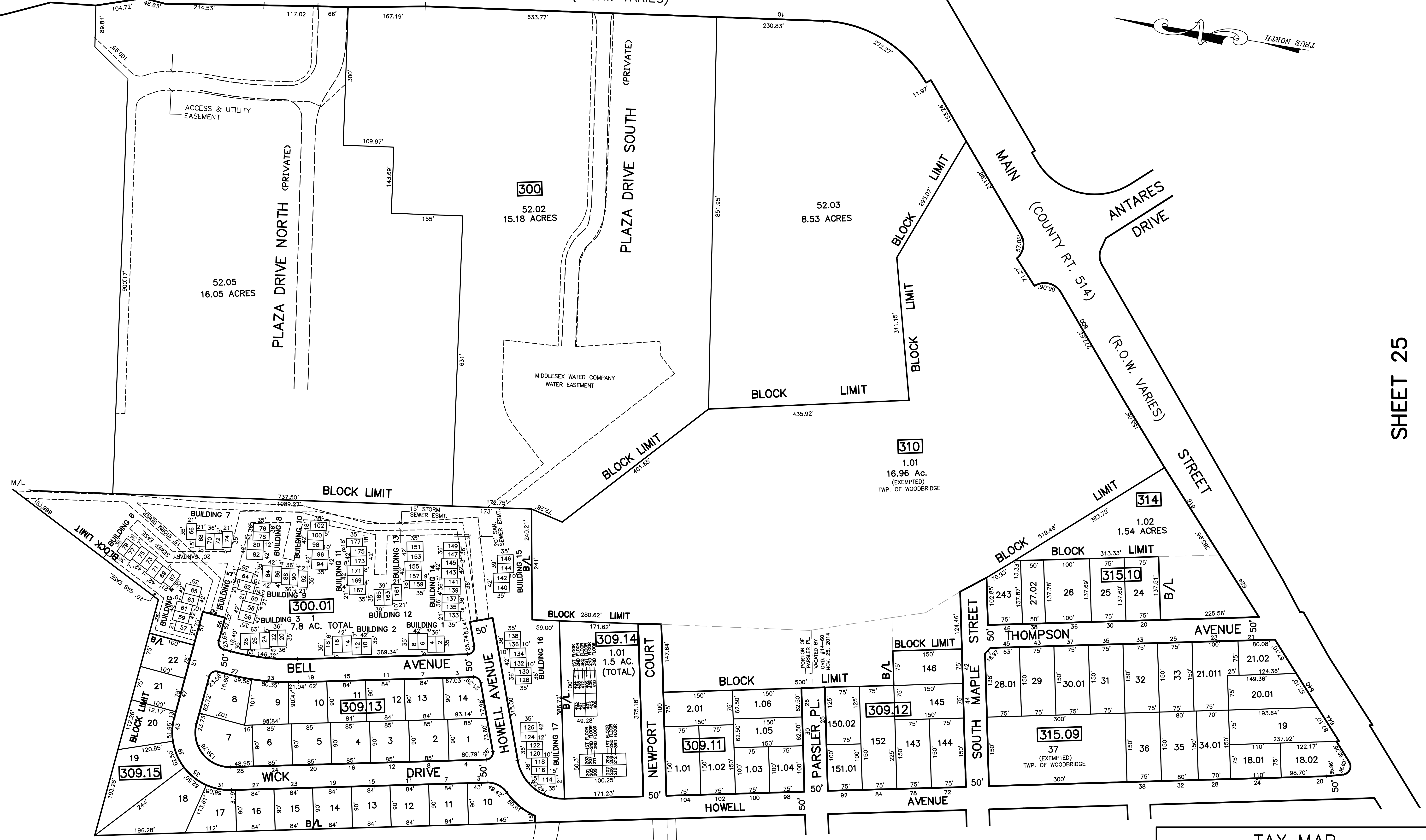
WOODBIDGE CENTER DRIVE (R.O.W. VARIES)



SHEET 53.01

SHEET 25

SHEET 53



NOTE
 PORTIONS OF THIS TAX MAP MAY HAVE BEEN PREPARED FROM
 SCANNED OR DIGITIZED FILED MAPS AND/OR TAX MAPS.
 ALL PORTIONS OF THIS TAX MAP HAVE BEEN PREPARED
 ELECTRONICALLY IN AUTOCAD MAP 2000.

SHEET 31

SHEET 30

TAX MAP
 WOODBRIDGE TOWNSHIP
 MIDDLESEX COUNTY, NEW JERSEY
 SCALE : 1" = 100' DATE : JUNE 2008
 MICHAEL J. McGURL, P.L.S.
 CME ASSOCIATES
 3141 BORDENTOWN AVENUE, PARLIN
 NEW JERSEY, 08859