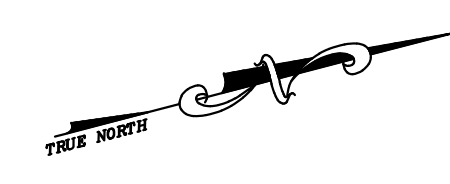


12/31/13	Top Map Revisions	REVISION	CHK.
12/31/12	Top Map Revisions	REVISION	CHK.
11/17/10	Subdivision-BK 747, lots 1 and 2	JSE	
09/03/10	Dedication of Capt. Carlsen Marina	JSE	
	REVISION	DESCRIPTION	

SHEET 36

SHEET 46

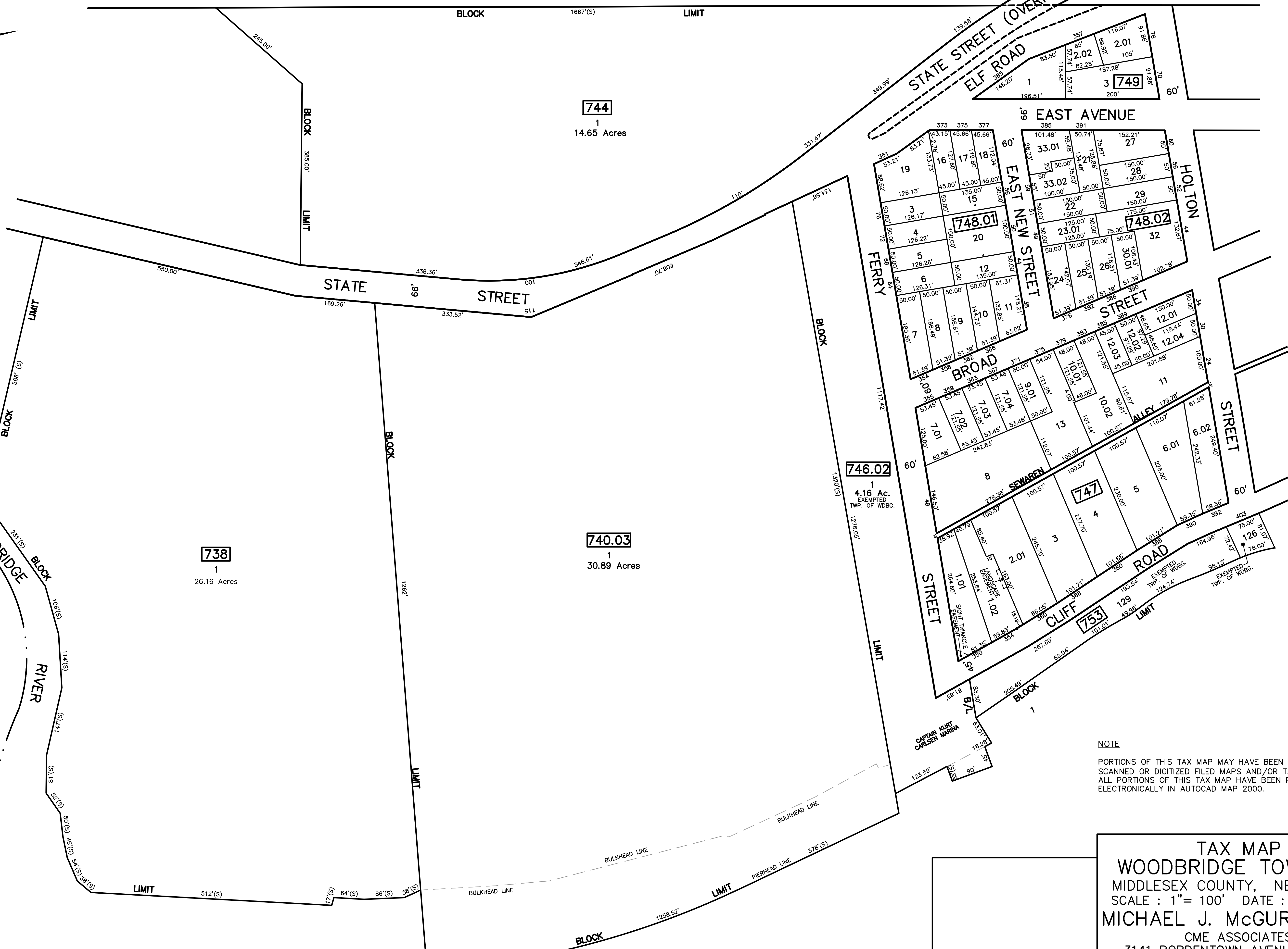


SHEET 36

SHEET 47

CITY OF PERTH AMBOY - MIDDLESEX COUNTY

CITY OF PERTH AMBOY - MIDDLESEX COUNTY



NOTE
 PORTIONS OF THIS TAX MAP MAY HAVE BEEN PREPARED FROM
 SCANNED OR DIGITIZED FILED MAPS AND/OR TAX MAPS.
 ALL PORTIONS OF THIS TAX MAP HAVE BEEN PREPARED
 ELECTRONICALLY IN AUTOCAD MAP 2000.

TAX MAP
WOODBIDGE TOWNSHIP
 MIDDLESEX COUNTY, NEW JERSEY
 SCALE : 1" = 100' DATE : JUNE 2008
MICHAEL J. McGURL, P.L.S.
 CME ASSOCIATES
 3141 BORDENTOWN AVENUE, PARLIN
 NEW JERSEY, 08859