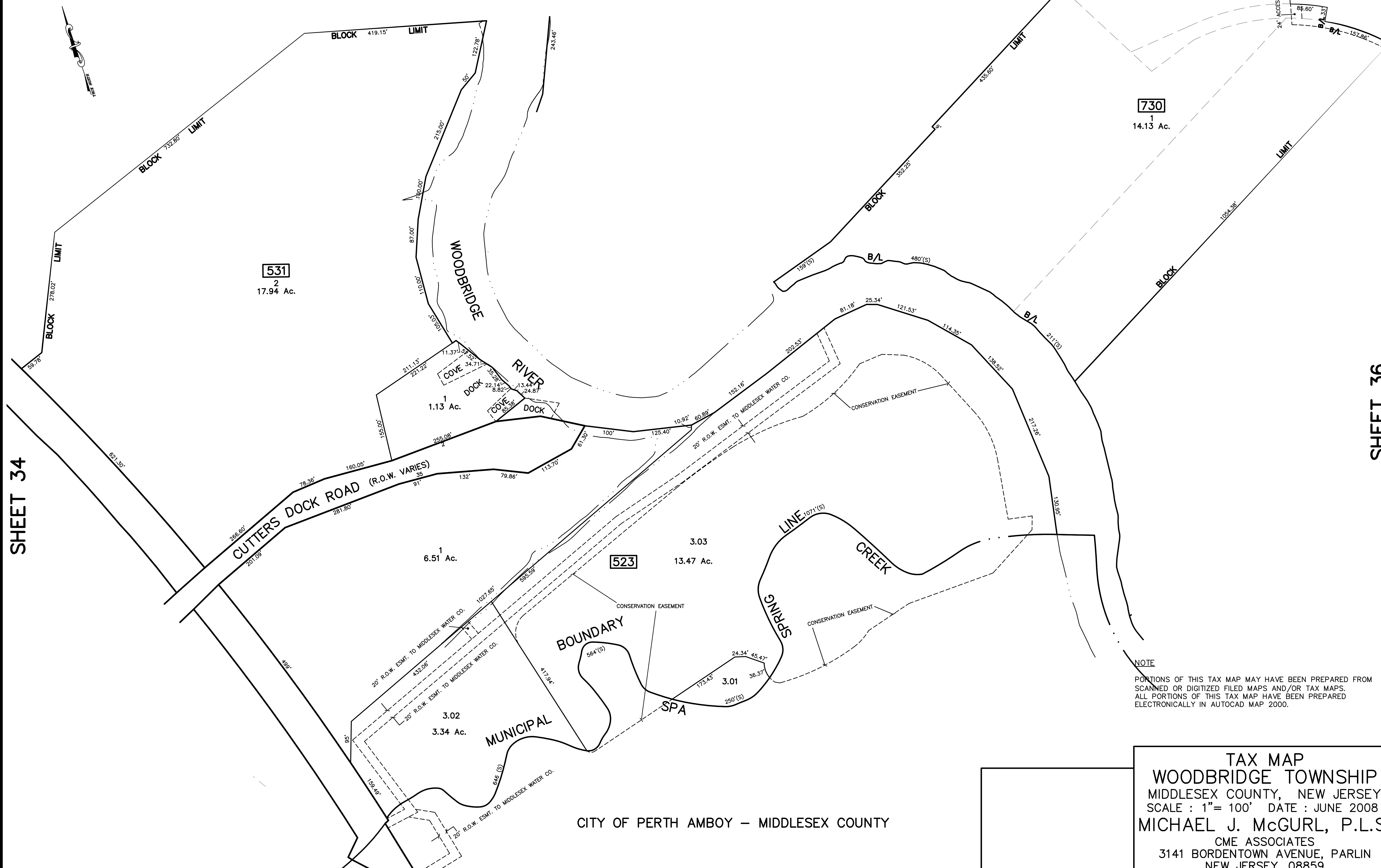


| | | |
|----------|------------------------------|---------|
| 12/21/12 | Top Map Revisions | SB |
| 12/29/10 | Added Conservation Easements | JSE |
| REVISED | DESCRIPTION | REV. BY |
| | | CHK. |

SHEET 45

SHEET 46



NOTE
 PORTIONS OF THIS TAX MAP MAY HAVE BEEN PREPARED FROM
 SCANNED OR DIGITIZED FILED MAPS AND/OR TAX MAPS.
 ALL PORTIONS OF THIS TAX MAP HAVE BEEN PREPARED
 ELECTRONICALLY IN AUTOCAD MAP 2000.

TAX MAP
WOODBIDGE TOWNSHIP
 MIDDLESEX COUNTY, NEW JERSEY
 SCALE : 1" = 100' DATE : JUNE 2008
MICHAEL J. MCGURL, P.L.S.
 CME ASSOCIATES
 3141 BORDENTOWN AVENUE, PARLIN
 NEW JERSEY, 08859

CITY OF PERTH AMBOY – MIDDLESEX COUNTY

SHEET 34

SHEET 36