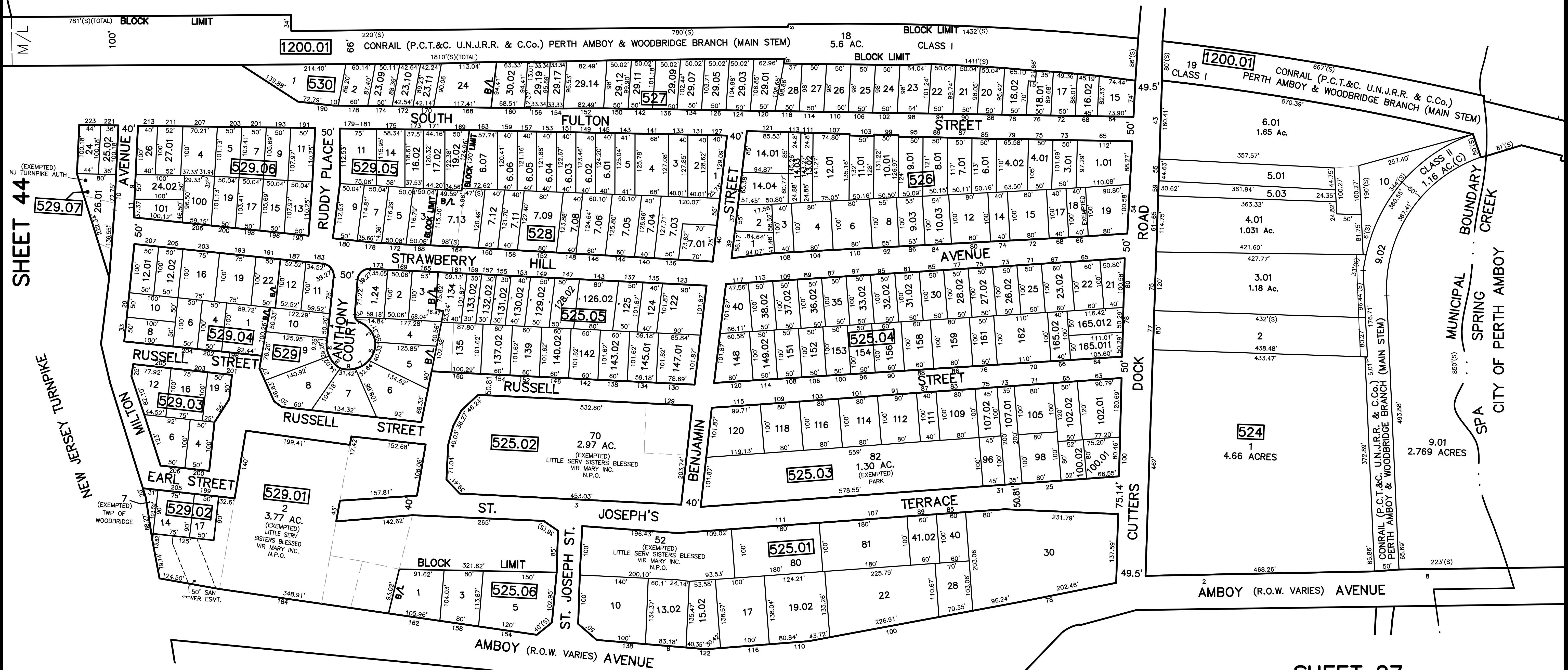
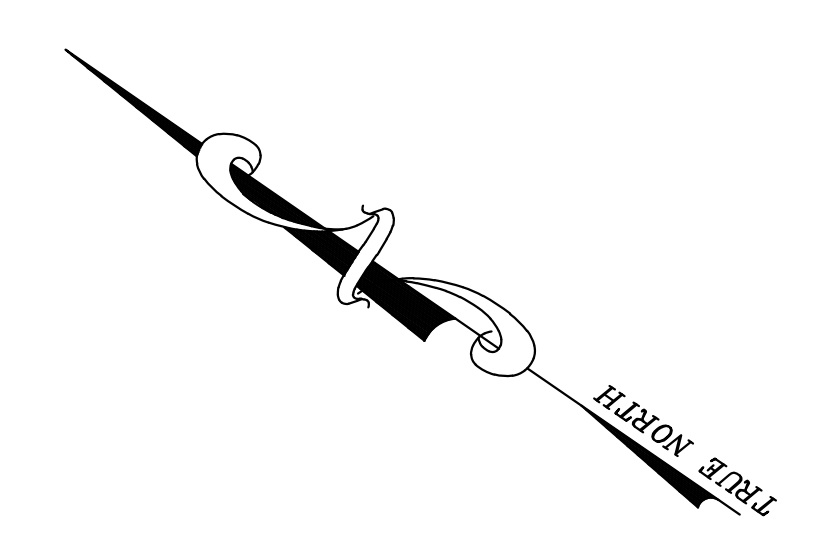


12/31/13	Top Map Revisions	SB
12/31/12	Top Map Revisions	SB
11/30/10	Subdivision-Bk 525.01, lot 40	USE
09/10/10	Access Easement-Bk 324, lot 7.02	USE
09/03/10	Subdivision-Bk 525.01, lots 19.02, 22, 28	USE
REVISED	DESCRIPTION	REV. BY
		CHK.



SHEET 44

NOTE
 PORTIONS OF THIS TAX MAP MAY HAVE BEEN PREPARED FROM
 SCANNED OR DIGITIZED FILED MAPS AND/OR TAX MAPS.
 ALL PORTIONS OF THIS TAX MAP HAVE BEEN PREPARED
 ELECTRONICALLY IN AUTOCAD MAP 2000.

TAX MAP
 WOODBRIDGE TOWNSHIP
 MIDDLESEX COUNTY, NEW JERSEY
 SCALE : 1"= 100' DATE : JUNE 2008
 MICHAEL J. McGURL, P.L.S.
 CME ASSOCIATES
 3141 BORDENTOWN AVENUE, PARLIN
 NEW JERSEY, 08859