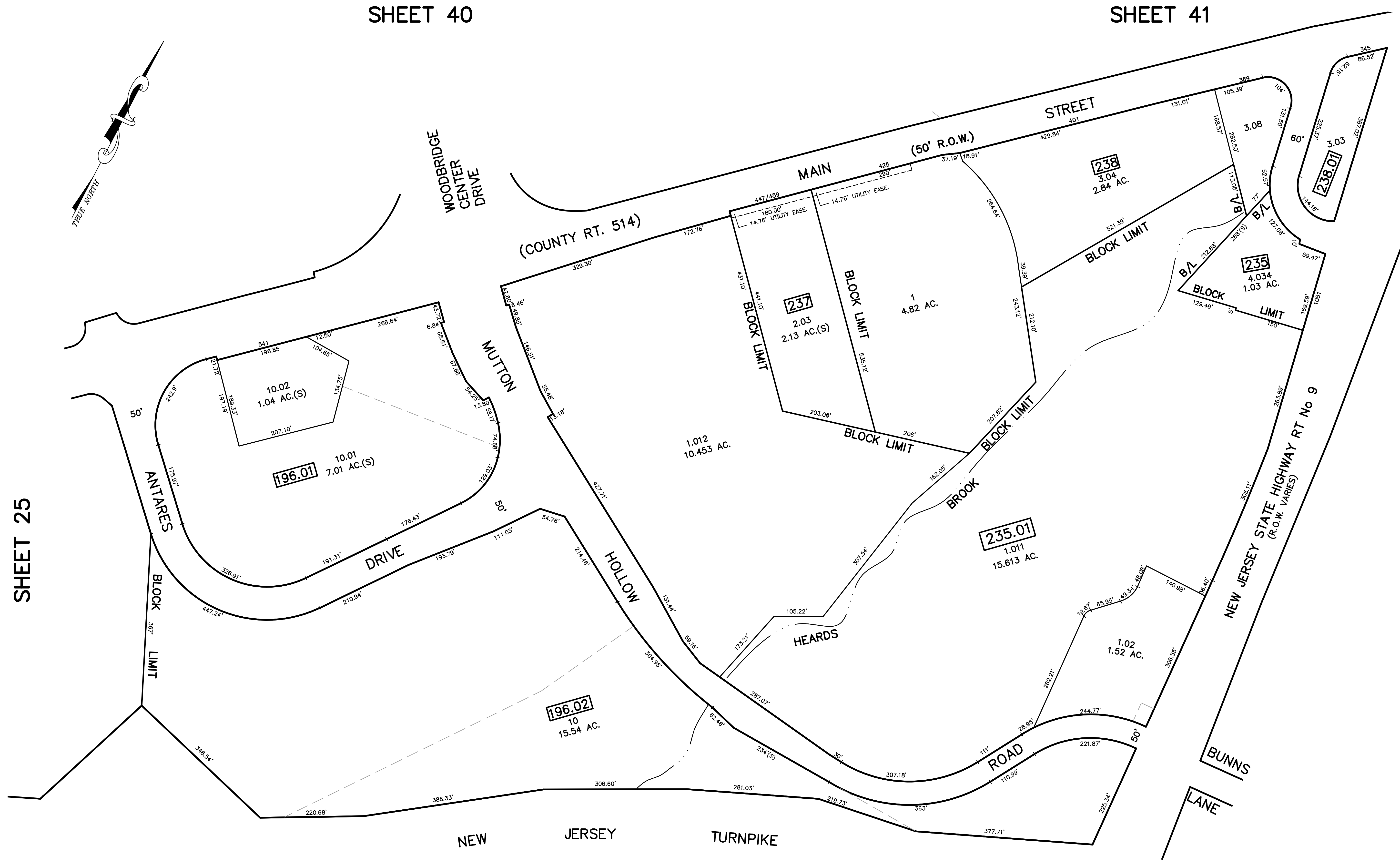
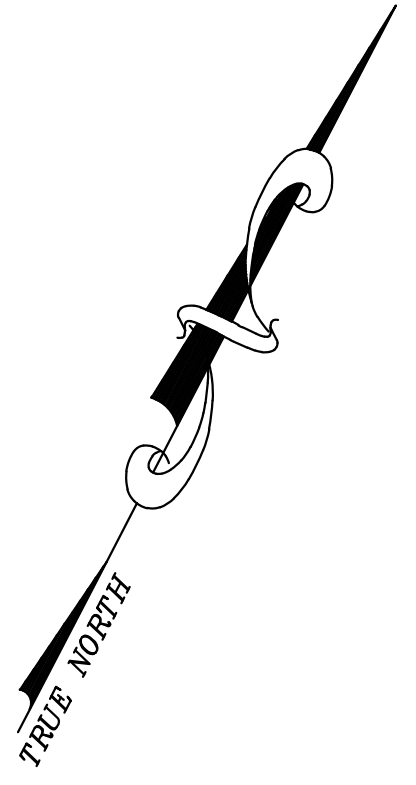


SHEET 40

SHEET 41

REVISED	DESCRIPTION	REV. BY	CHK.
12/31/15	Tax Map Revisions	SR	
12/31/13	Tax Map Revisions	SR	
12/31/12	Tax Map Revisions	SR	



SHEET 25

SHEET 42

SHEET 21

SHEET 26

**NOTE**  
 PORTIONS OF THIS TAX MAP MAY HAVE BEEN PREPARED FROM  
 SCANNED OR DIGITIZED FILED MAPS AND/OR TAX MAPS.  
 ALL PORTIONS OF THIS TAX MAP HAVE BEEN PREPARED  
 ELECTRONICALLY IN AUTOCAD MAP 2000.

**TAX MAP**  
 WOODBRIDGE TOWNSHIP  
 MIDDLESEX COUNTY, NEW JERSEY  
 SCALE : 1"= 100' DATE : JUNE 2008  
 MICHAEL J. McGURL, P.L.S.  
 CME ASSOCIATES  
 3141 BORDENTOWN AVENUE, PARLIN  
 NEW JERSEY, 08859