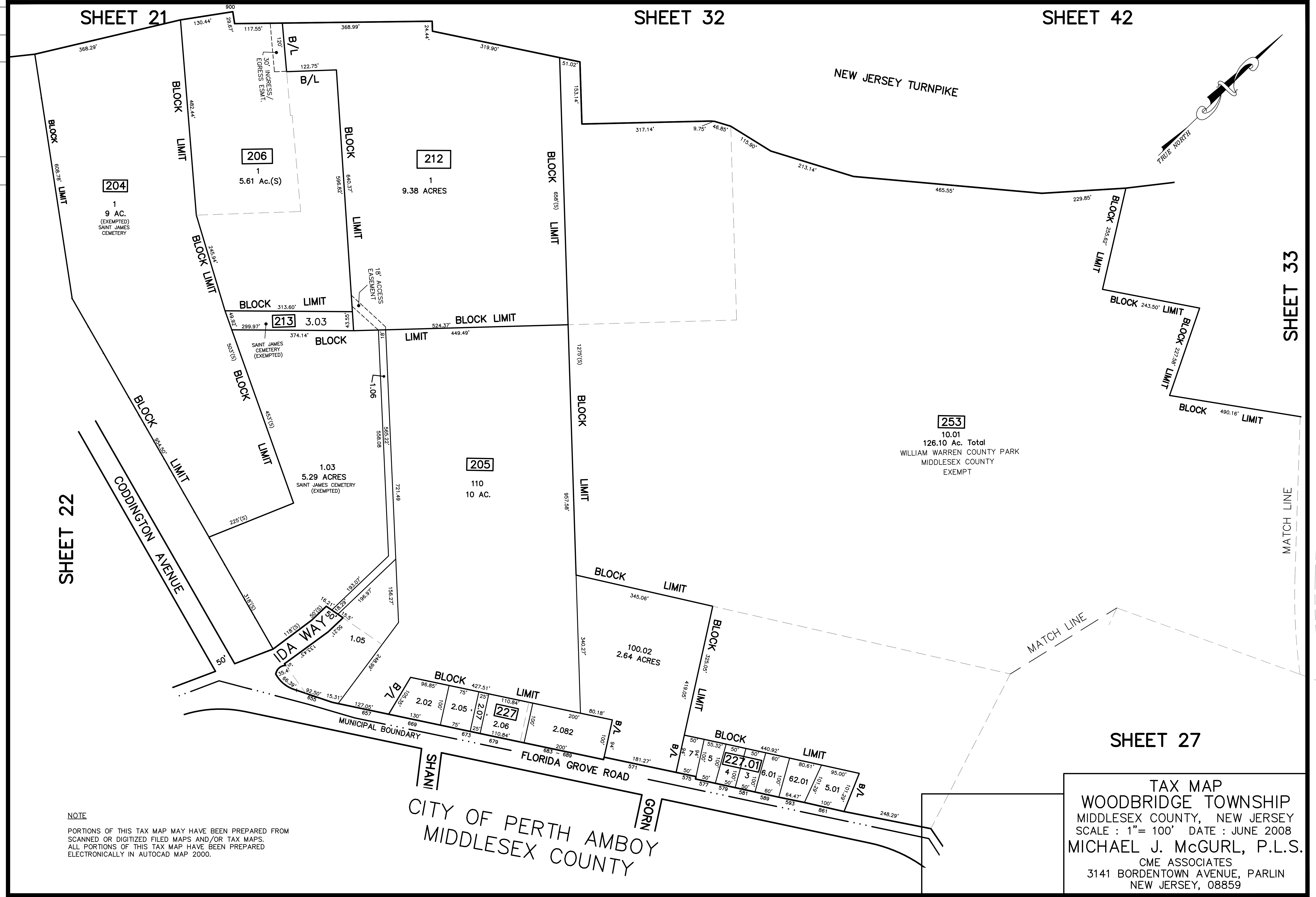


REV.	BY	CHK.	DESCRIPTION
12/31/15	SR		Tax Map Revisions
12/31/14	SR		Tax Map Revisions
12/31/14	SR		Tax Map Revisions
12/31/12	SR		Tax Map Revisions
			REVISED



NOTE
 PORTIONS OF THIS TAX MAP MAY HAVE BEEN PREPARED FROM
 SCANNED OR DIGITIZED FILED MAPS AND/OR TAX MAPS.
 ALL PORTIONS OF THIS TAX MAP HAVE BEEN PREPARED
 ELECTRONICALLY IN AUTOCAD MAP 2000.

TAX MAP
WOODBIDGE TOWNSHIP
 MIDDLESEX COUNTY, NEW JERSEY
 SCALE : 1"= 100' DATE : JUNE 2008
MICHAEL J. McGURL, P.L.S.
 CME ASSOCIATES
 3141 BORDENTOWN AVENUE, PARLIN
 NEW JERSEY, 08859

SHEET 33

SHEET 22

SHEET 21

SHEET 32

SHEET 42

SHEET 27

