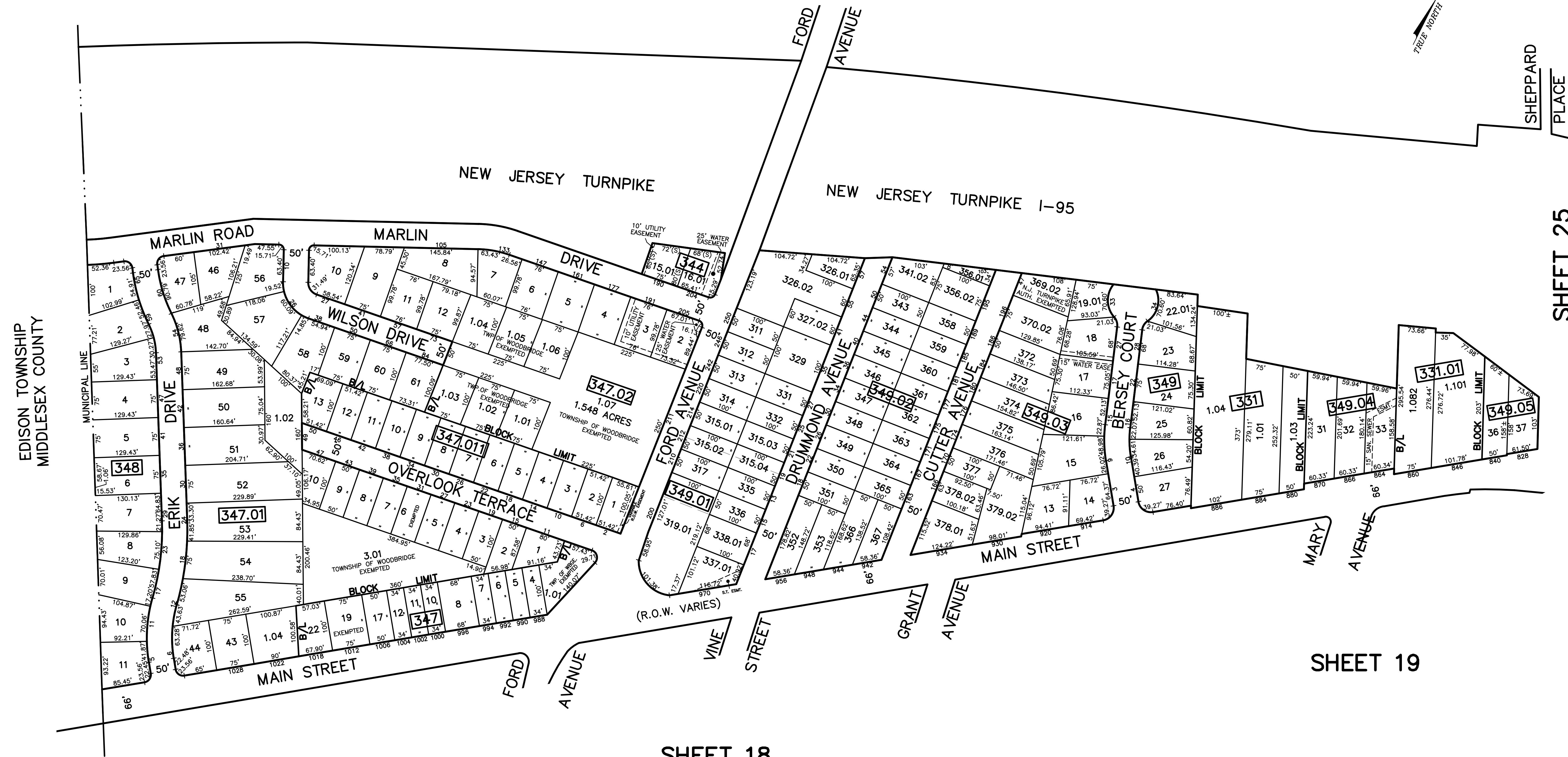
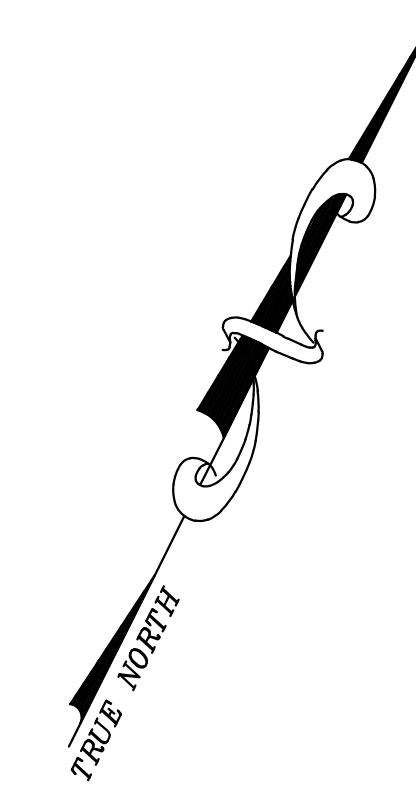


12/31/20	Tox Map Revisions	SB
12/31/14	Tox Map Revisions	SB
12/31/13	Tox Map Revisions	SB
12/31/12	Tox Map Revisions	SB
11/02/11	8149.01 lots 337 & 338-Changed to 337.01 & 338.01 Easement Added to 337.01	SB
09/02/10	Subdivision-Bik 347.02, lot 1	JSE
REVISED	DESCRIPTION	
REV. BY	CHK.	

SHEET 24

SHEET 29



SHEET 25

SHEET 19

SHEET 18

NOTE  
 PORTIONS OF THIS TAX MAP MAY HAVE BEEN PREPARED FROM  
 SCANNED OR DIGITIZED FILED MAPS AND/OR TAX MAPS.  
 ALL PORTIONS OF THIS TAX MAP HAVE BEEN PREPARED  
 ELECTRONICALLY IN AUTOCAD MAP 2000.

TAX MAP  
 WOODBRIDGE TOWNSHIP  
 MIDDLESEX COUNTY, NEW JERSEY  
 SCALE : 1"= 100' DATE : JUNE 2008  
 MICHAEL J. McGURL, P.L.S.  
 CME ASSOCIATES  
 3141 BORDENTOWN AVENUE, PARLIN  
 NEW JERSEY, 08859