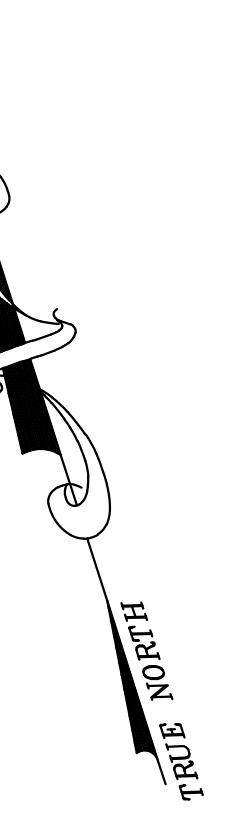
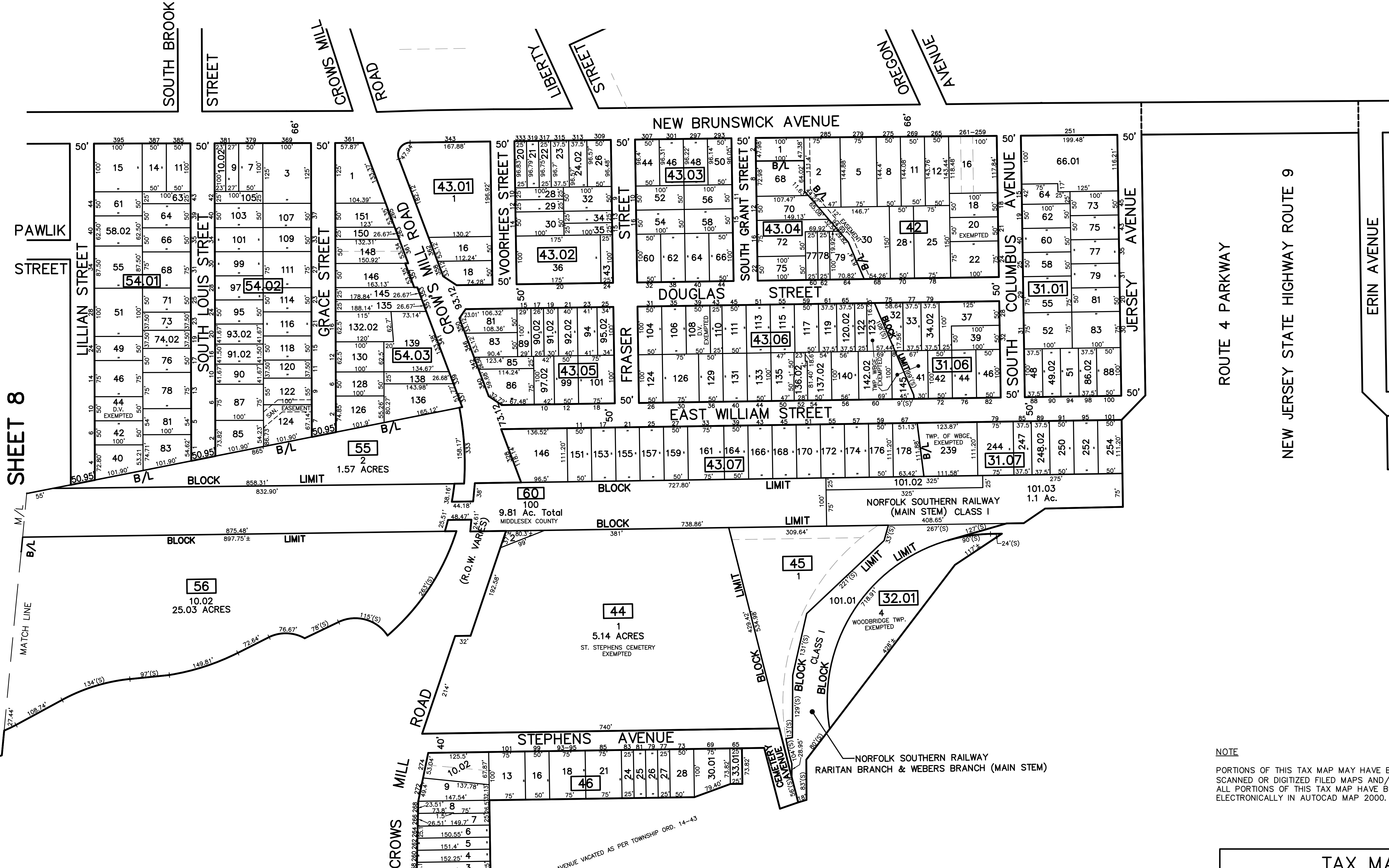


SHEET 9

12/31/14	Top Map Revisions	SB
12/31/12	Top Map Revisions	SB
REVISED	DESCRIPTION	REV. BY
CHK.		CHK.



SHEET 11

ROUTE 4 PARKWAY
 NEW JERSEY STATE HIGHWAY ROUTE 9
 ERIN AVENUE

SHEET 8

SHEET 5

NOTE
 PORTIONS OF THIS TAX MAP MAY HAVE BEEN PREPARED FROM
 SCANNED OR DIGITIZED FILED MAPS AND/OR TAX MAPS.
 ALL PORTIONS OF THIS TAX MAP HAVE BEEN PREPARED
 ELECTRONICALLY IN AUTOCAD MAP 2000.

TAX MAP
 WOODBRIDGE TOWNSHIP
 MIDDLESEX COUNTY, NEW JERSEY
 SCALE : 1"= 100' DATE : JUNE 2008
 MICHAEL J. McGURL, P.L.S.
 CME ASSOCIATES
 3141 BORDENTOWN AVENUE, PARLIN
 NEW JERSEY, 08859