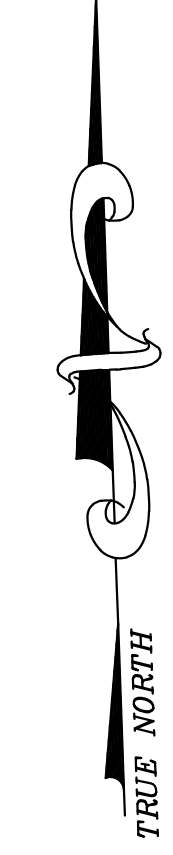
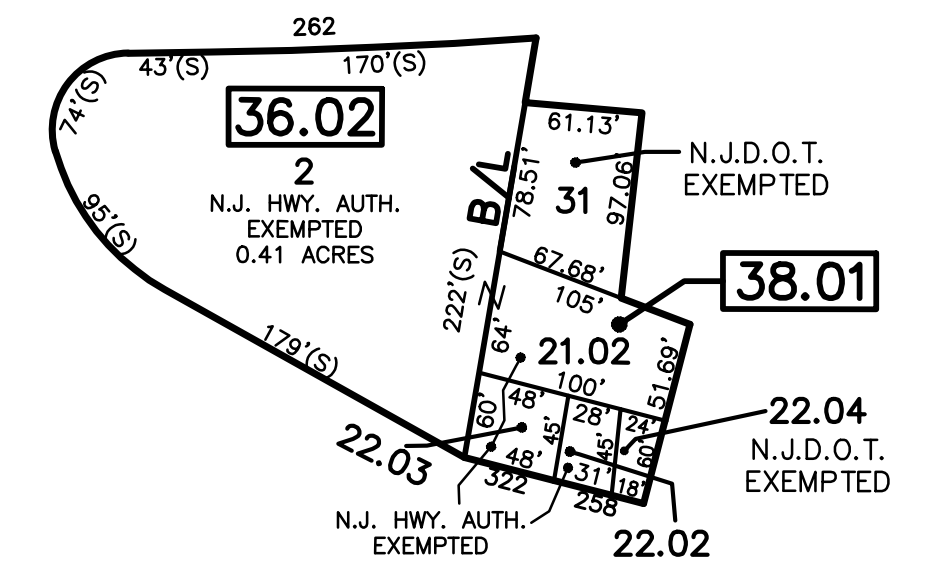
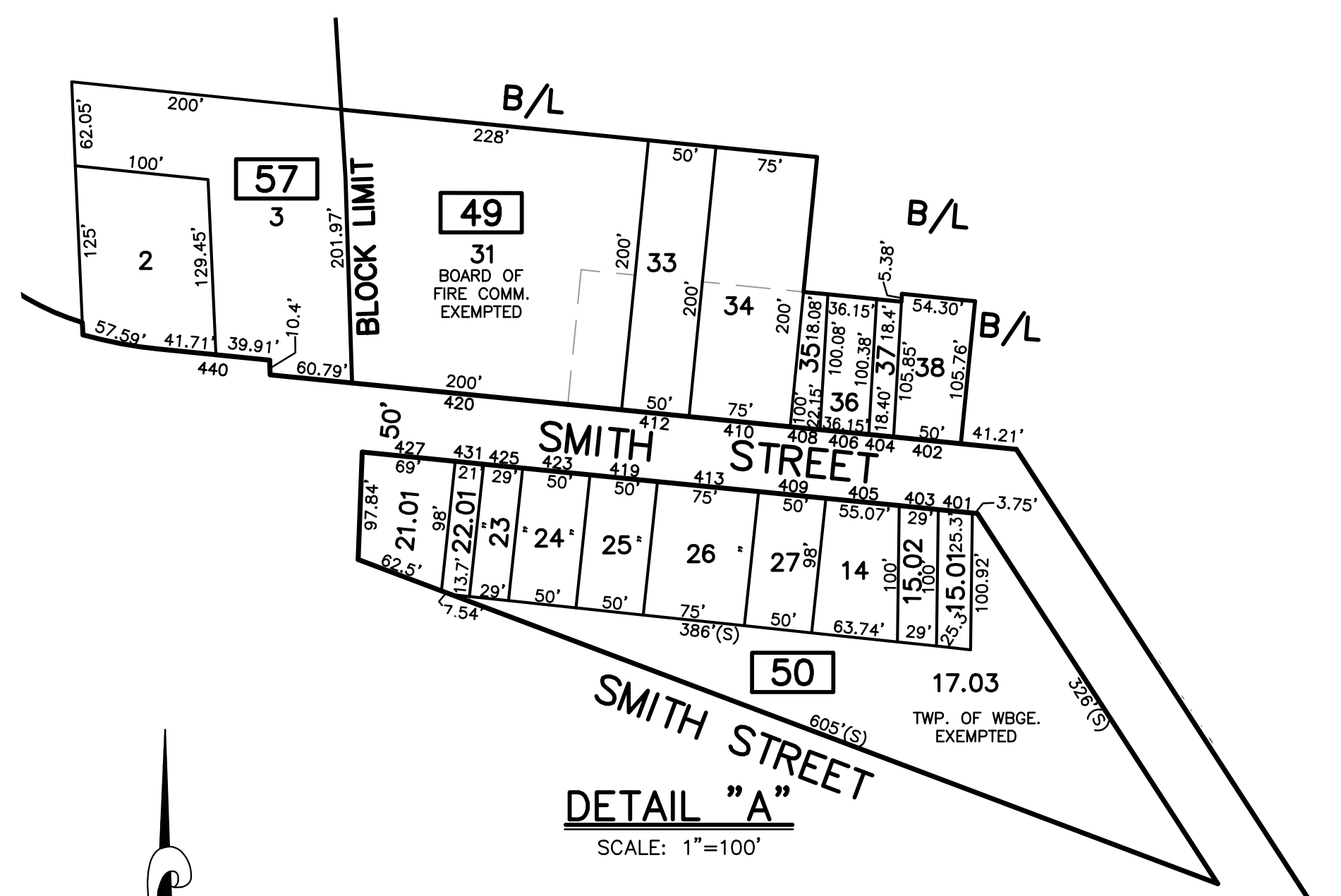
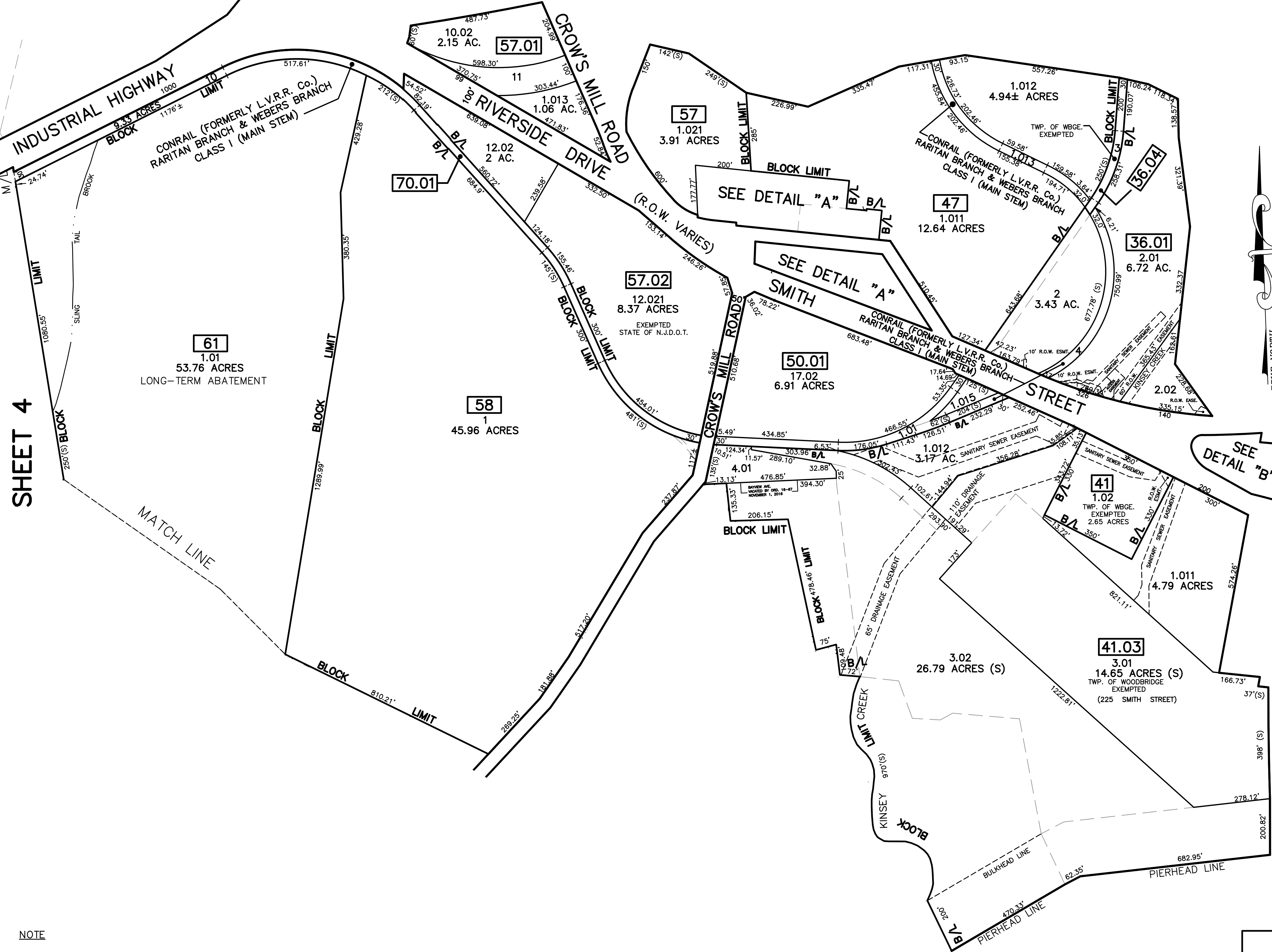


DATE	DESCRIPTION	BY
12/31/16	Top Map Revisions	SB
12/31/15	Top Map Revisions	SB
12/31/14	Top Map Revisions	SB
12/31/12	Top Map Revisions	SB
10/19/10	Access Easement-Bk. 41, lot 1.02	JSE
10/12/10	Sanitary Easement-Bk. 41.03, lot 1.01	JSE
10/12/10	Sanitary Easement-Bk. 41.03, lot 1.02	JSE
10/12/10	Easement-Bk. 36.01, lot 2.01	JSE
REVISED	DESCRIPTION	REV. BY
		CHK.

SHEET 7

SHEET 10



NEW JERSEY STATE HIGHWAY ROUTE 4 PARKWAY
 NEW JERSEY STATE HIGHWAY ROUTE 9

SHEET 6
 SHEET 3

SHEET 4

SHEET 2

NOTE
 PORTIONS OF THIS TAX MAP MAY HAVE BEEN PREPARED FROM
 SCANNED OR DIGITIZED FILED MAPS AND/OR TAX MAPS.
 ALL PORTIONS OF THIS TAX MAP HAVE BEEN PREPARED
 ELECTRONICALLY IN AUTOCAD MAP 2000.

TAX MAP
 WOODBRIDGE TOWNSHIP
 MIDDLESEX COUNTY, NEW JERSEY
 SCALE : 1"= 200' DATE : JUNE 2008
 MICHAEL J. McGURL, P.L.S.
 CME ASSOCIATES
 3141 BORDENTOWN AVENUE, PARLIN
 NEW JERSEY, 08859