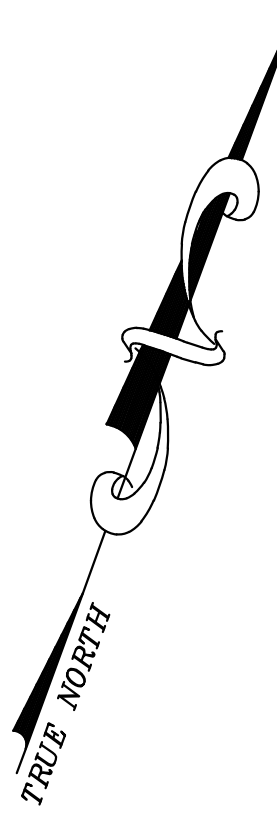


|          |  |         |
|----------|--|---------|
| 12/31/16 | Top Map Revisions  | SB      |
| 12/31/14 | Top Map Revisions  | SB      |
| 12/31/13 | Top Map Revisions  | SB      |
| 11/2/11  | Block 93, lot 100 & Block 83 lot 1-5 SMTS                | SB      |
| 9/19/10  | MCUA Easement-Blk 51, lots 2 and 2.03                    | JSE     |
| 9/16/10  | Land area: Blk 75.01, lots 1.00 and 1.04 - Blk 75, ll to | JSE     |
| 09/08/10 | R.O.M. Tdng. Blk 75.01, lots 1.03, 1.04                  | JSE     |
| REVISED  | DESCRIPTION  | REV. BY |
|          |  | CHK.    |

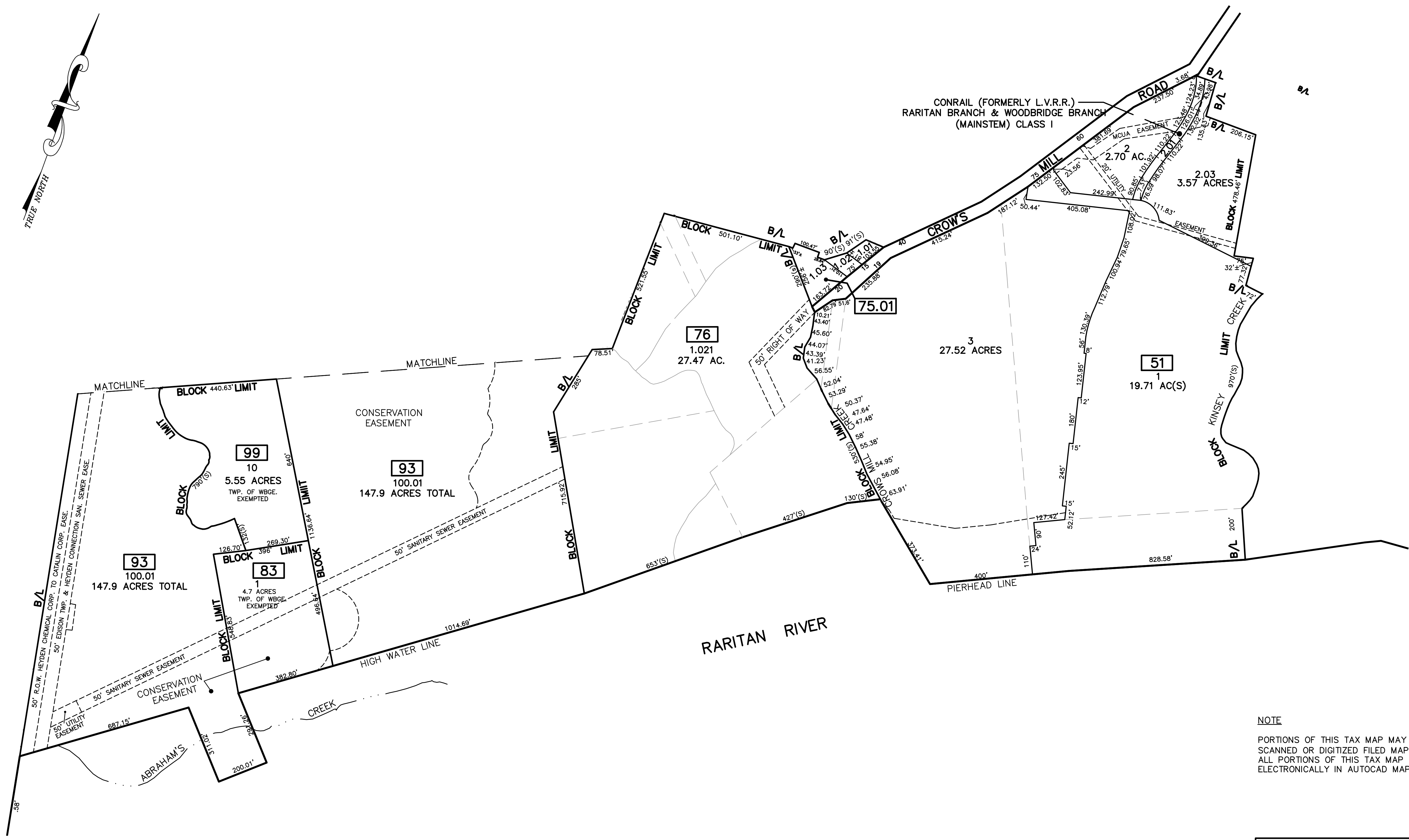
SHEET 4

SHEET 5



SHEET 1

SHEET 5



NOTE  
 PORTIONS OF THIS TAX MAP MAY HAVE BEEN PREPARED FROM  
 SCANNED OR DIGITIZED FILED MAPS AND/OR TAX MAPS.  
 ALL PORTIONS OF THIS TAX MAP HAVE BEEN PREPARED  
 ELECTRONICALLY IN AUTOCAD MAP 2000.

TAX MAP  
 WOODBRIDGE TOWNSHIP  
 MIDDLESEX COUNTY, NEW JERSEY  
 SCALE : 1" = 200' DATE : JUNE 2008  
 MICHAEL J. MCGURL, P.L.S.  
 CME ASSOCIATES  
 3141 BORDENTOWN AVENUE, PARLIN  
 NEW JERSEY, 08859