

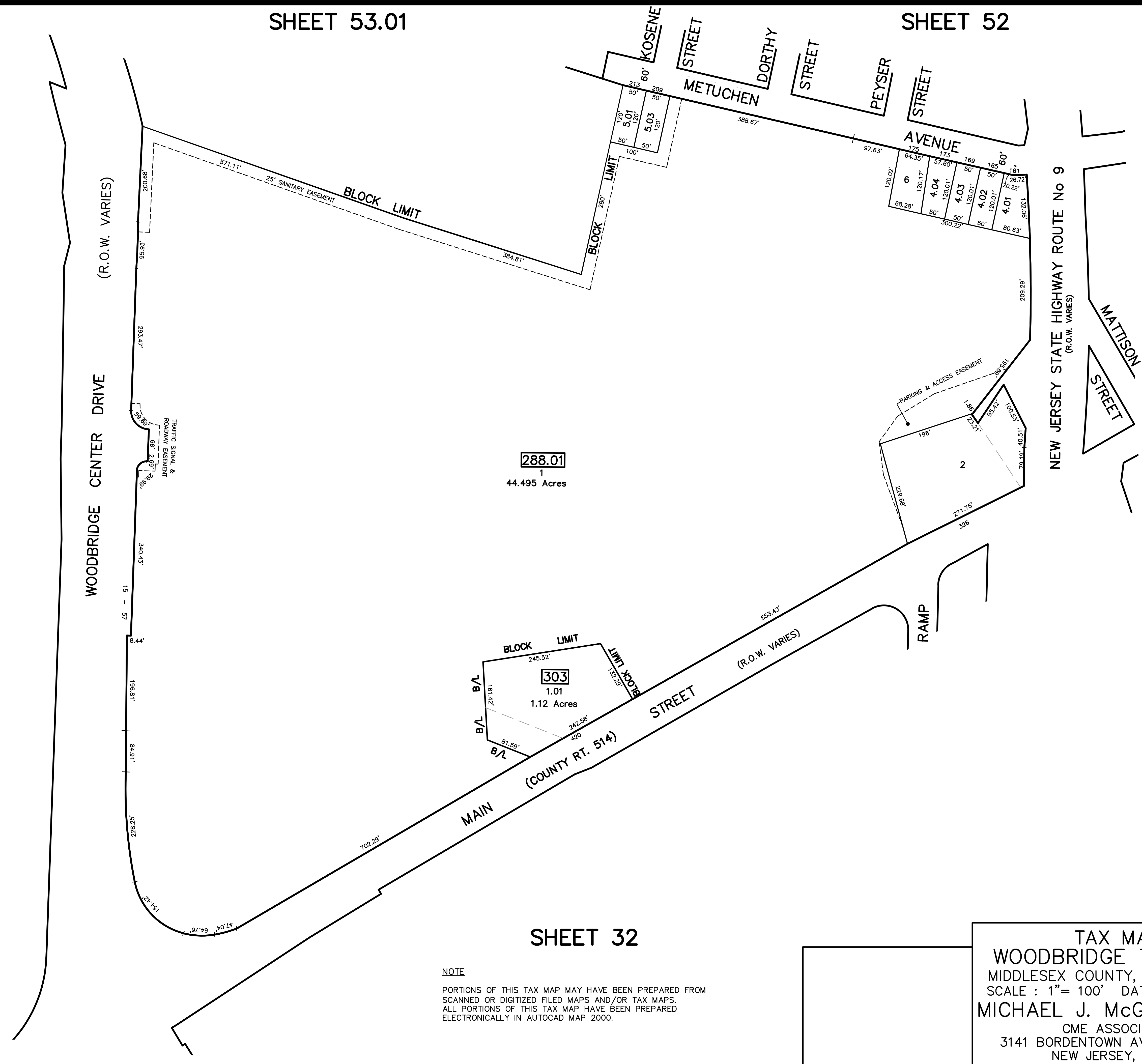
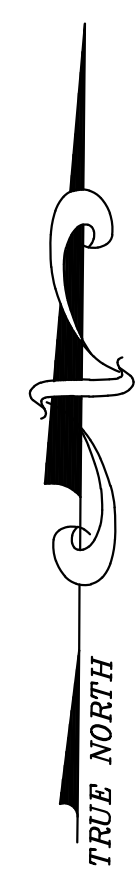
SHEET 53.01

SHEET 52

SHEET 40

SHEET 54

REVISED	DESCRIPTION	REV. BY	CHK.
12/31/17	Tax Map Revisions	SR	
12/31/14	Tax Map Revisions	SR	
12/31/13	Tax Map Revisions	SR	



288.01

44.495 Acres

303

1.01

1.12 Acres

SHEET 32

NOTE
 PORTIONS OF THIS TAX MAP MAY HAVE BEEN PREPARED FROM
 SCANNED OR DIGITIZED FILED MAPS AND/OR TAX MAPS.
 ALL PORTIONS OF THIS TAX MAP HAVE BEEN PREPARED
 ELECTRONICALLY IN AUTOCAD MAP 2000.

TAX MAP
 WOODBRIDGE TOWNSHIP
 MIDDLESEX COUNTY, NEW JERSEY
 SCALE : 1" = 100' DATE : JUNE 2008
 MICHAEL J. MCGURL, P.L.S.
 CME ASSOCIATES
 3141 BORDENTOWN AVENUE, PARLIN
 NEW JERSEY, 08859