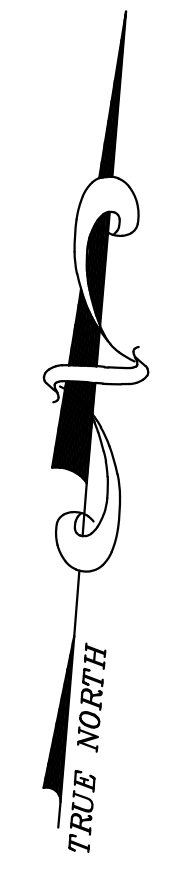


12/31/15	Tax Map Revisions	SB
12/31/12	Tax Map Revisions	SB
09/02/10	Subdivision-Bk. 315.071, lots 52, 53, 61, 02	JSE
REVISED	DESCRIPTION	REV. BY
		CHK.



SHEET 29

SHEET 39

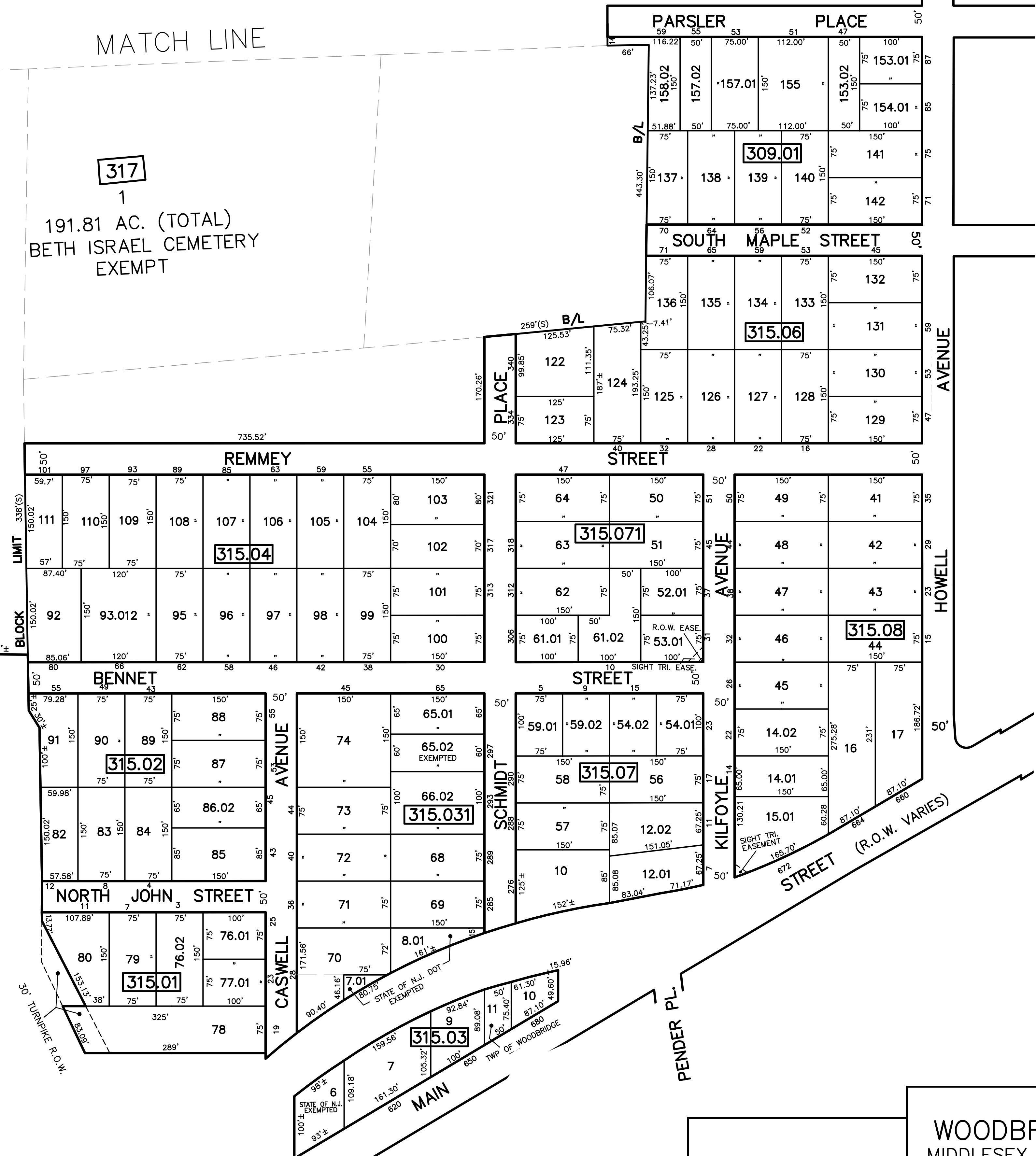
SHEET 31

MATCH LINE

317

1  
191.81 AC. (TOTAL)  
BETH ISRAEL CEMETERY  
EXEMPT

NEW JERSEY STATE HIGHWAY ROUTE 4 PARKWAY  
 5.00±  
 68±



SHEET 40

NOTE

PORTIONS OF THIS TAX MAP MAY HAVE BEEN PREPARED FROM  
 SCANNED OR DIGITIZED FILED MAPS AND/OR TAX MAPS.  
 ALL PORTIONS OF THIS TAX MAP HAVE BEEN PREPARED  
 ELECTRONICALLY IN AUTOCAD MAP 2000.

SHEET 25

TAX MAP  
 WOODBRIDGE TOWNSHIP  
 MIDDLESEX COUNTY, NEW JERSEY  
 SCALE : 1"= 100' DATE : JUNE 2008  
 MICHAEL J. McGURL, P.L.S.  
 CME ASSOCIATES  
 3141 BORDENTOWN AVENUE, PARLIN  
 NEW JERSEY, 08859