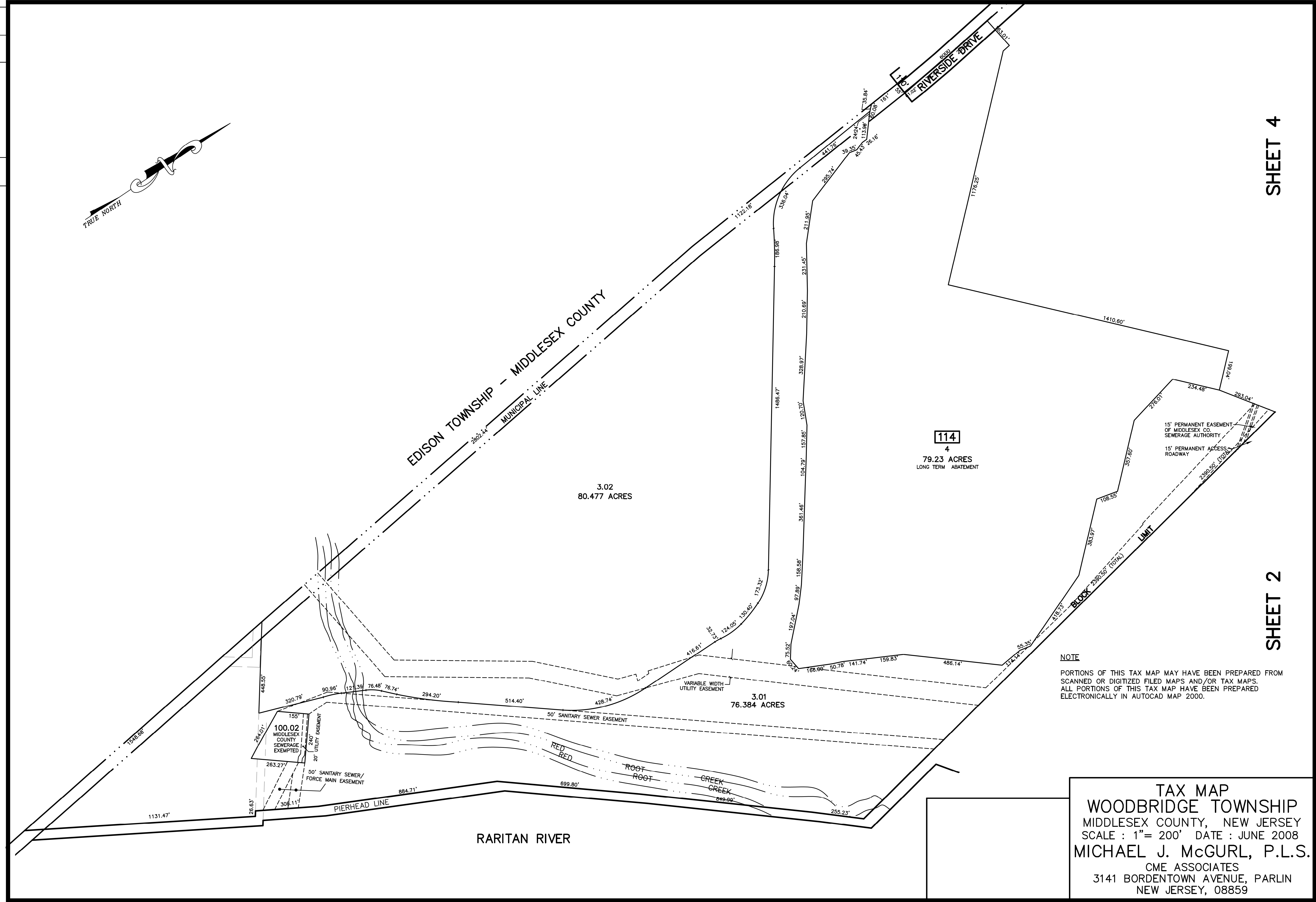
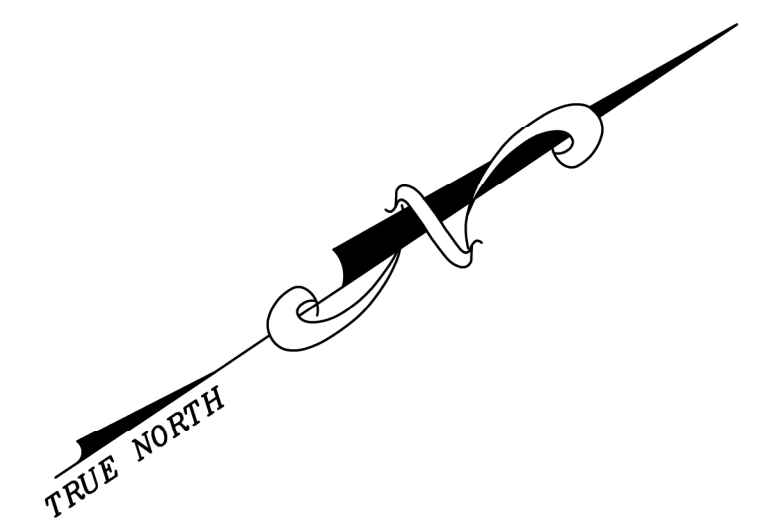


12/31/21	Tax Map Revisions	SB	REV. BY	CHK.
	REVISED			



SHEET 4

SHEET 2

NOTE
 PORTIONS OF THIS TAX MAP MAY HAVE BEEN PREPARED FROM
 SCANNED OR DIGITIZED FILED MAPS AND/OR TAX MAPS.
 ALL PORTIONS OF THIS TAX MAP HAVE BEEN PREPARED
 ELECTRONICALLY IN AUTOCAD MAP 2000.

114
 4
 79.23 ACRES
 LONG TERM ABATEMENT

100.02
 MIDDLESEX
 COUNTY
 SEWERAGE
 EXEMPTED
 155'
 240'
 20' UTILITY EASEMENT
 50' SANITARY SEWER/
 FORCE MAIN EASEMENT

TAX MAP
WOODBIDGE TOWNSHIP
 MIDDLESEX COUNTY, NEW JERSEY
 SCALE : 1" = 200' DATE : JUNE 2008
MICHAEL J. McGURL, P.L.S.
 CME ASSOCIATES
 3141 BORDENTOWN AVENUE, PARLIN
 NEW JERSEY, 08859