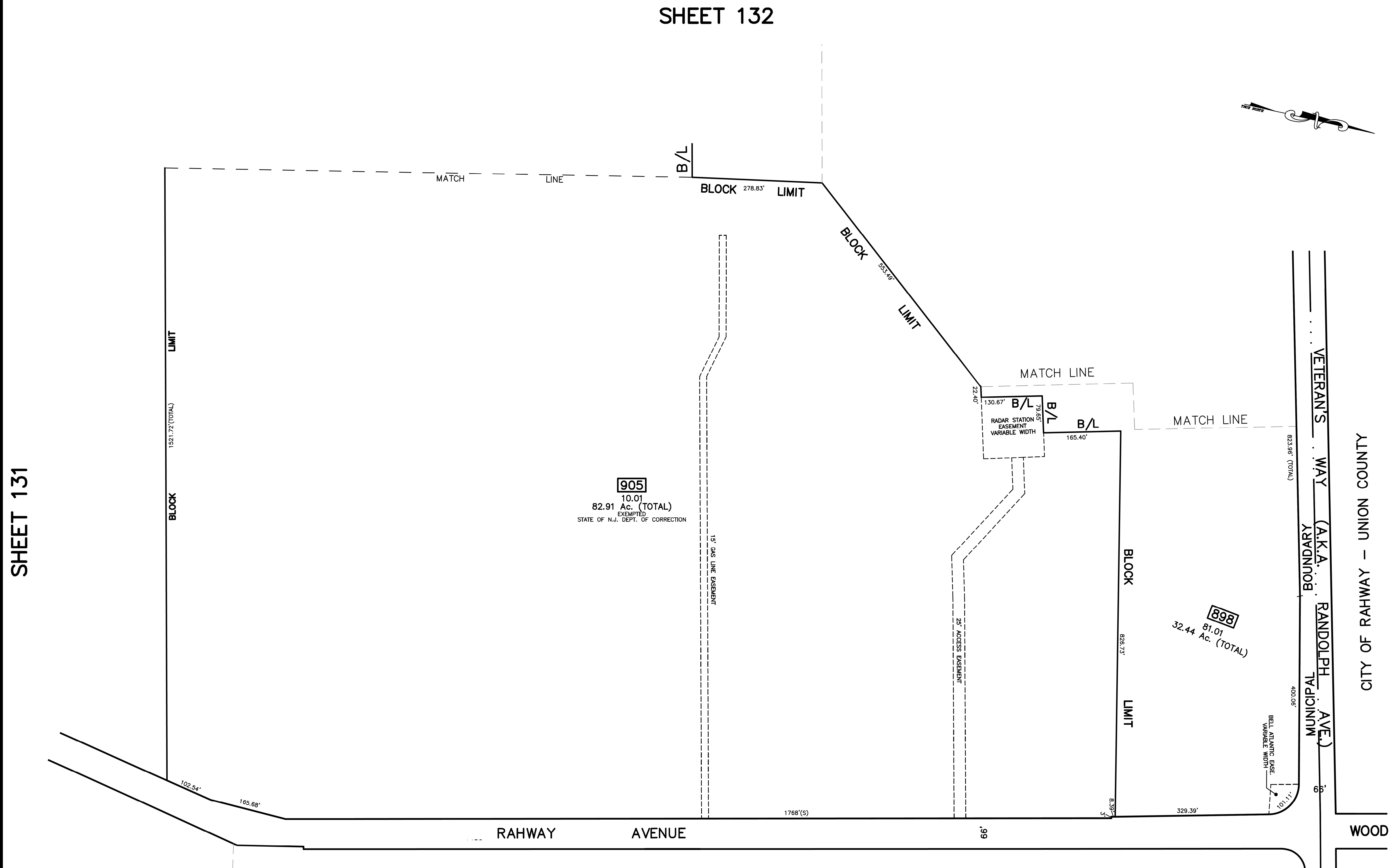


SHEET 132

12/31/16	Tax Map Revisions	SR	REV. BY	CHK.
12/31/12	Tax Map Revisions	SR		
	REVISION DESCRIPTION			



SHEET 131

905
 10.01
 82.91 Ac. (TOTAL)
 EXEMPTED
 STATE OF N.J. DEPT. OF CORRECTION

898
 81.01
 32.44 Ac. (TOTAL)

TAX MAP
WOODBIDGE TOWNSHIP
 MIDDLESEX COUNTY, NEW JERSEY
 SCALE : 1" = 100' DATE : JUNE 2008
MICHAEL J. McGURL, P.L.S.
 CME ASSOCIATES
 3141 BORDENTOWN AVENUE, PARLIN
 NEW JERSEY, 08859

NOTE
 PORTIONS OF THIS TAX MAP MAY HAVE BEEN PREPARED FROM
 SCANNED OR DIGITIZED FILED MAPS AND/OR TAX MAPS.
 ALL PORTIONS OF THIS TAX MAP HAVE BEEN PREPARED
 ELECTRONICALLY IN AUTOCAD MAP 2000.

SHEET 135