

12/31/21	Tax Map Revisions	SB	CHK.
12/31/19	Tax Map Revisions	SB	
12/31/14	Tax Map Revisions	SB	
REVISED	DESCRIPTION	REV. BY	CHK.

SHEET 129

SHEET 112



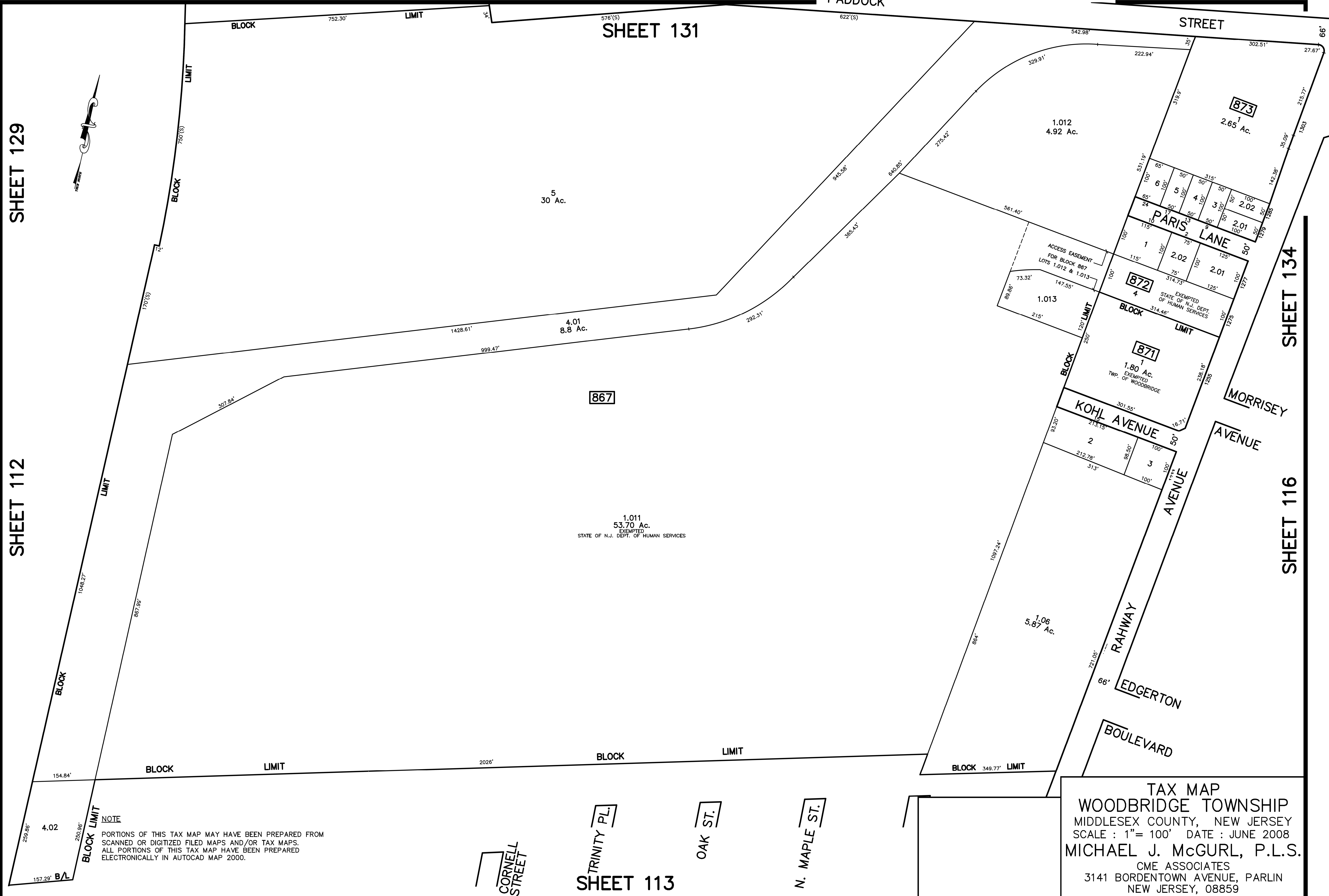
NOTE
 PORTIONS OF THIS TAX MAP MAY HAVE BEEN PREPARED FROM
 SCANNED OR DIGITIZED FILED MAPS AND/OR TAX MAPS.
 ALL PORTIONS OF THIS TAX MAP HAVE BEEN PREPARED
 ELECTRONICALLY IN AUTOCAD MAP 2000.

SHEET 131

SHEET 113

SHEET 134

SHEET 116



TAX MAP
 WOODBRIDGE TOWNSHIP
 MIDDLESEX COUNTY, NEW JERSEY
 SCALE : 1" = 100' DATE : JUNE 2008
 MICHAEL J. McGURL, P.L.S.
 CME ASSOCIATES
 3141 BORDENTOWN AVENUE, PARLIN
 NEW JERSEY, 08859