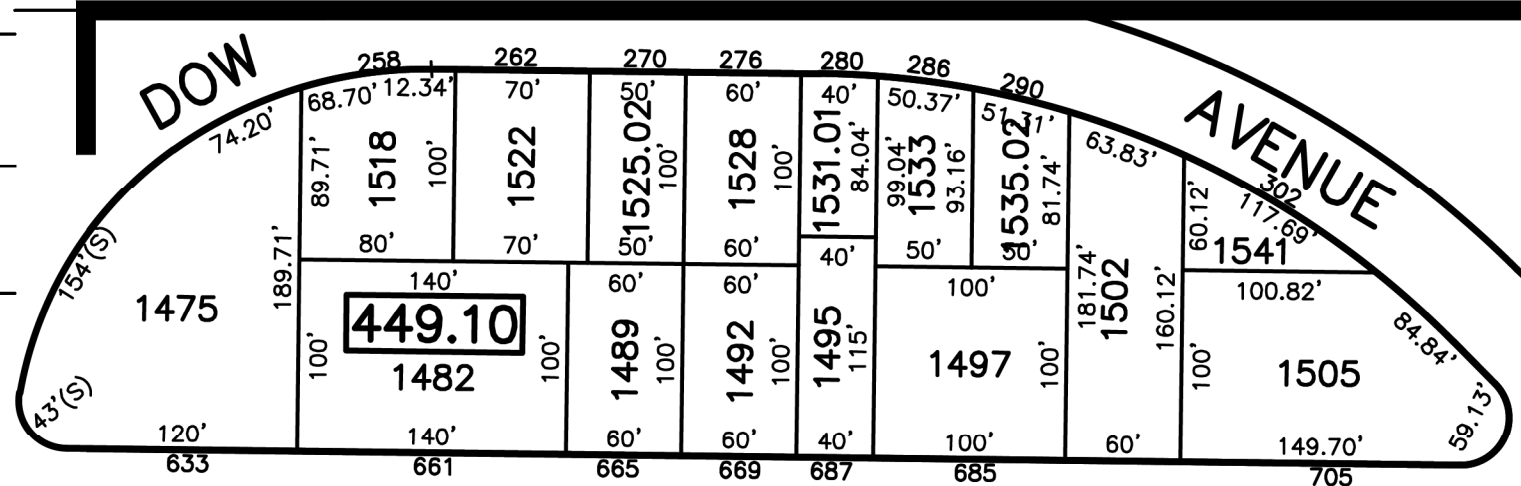


SHEET 106

SHEET 107

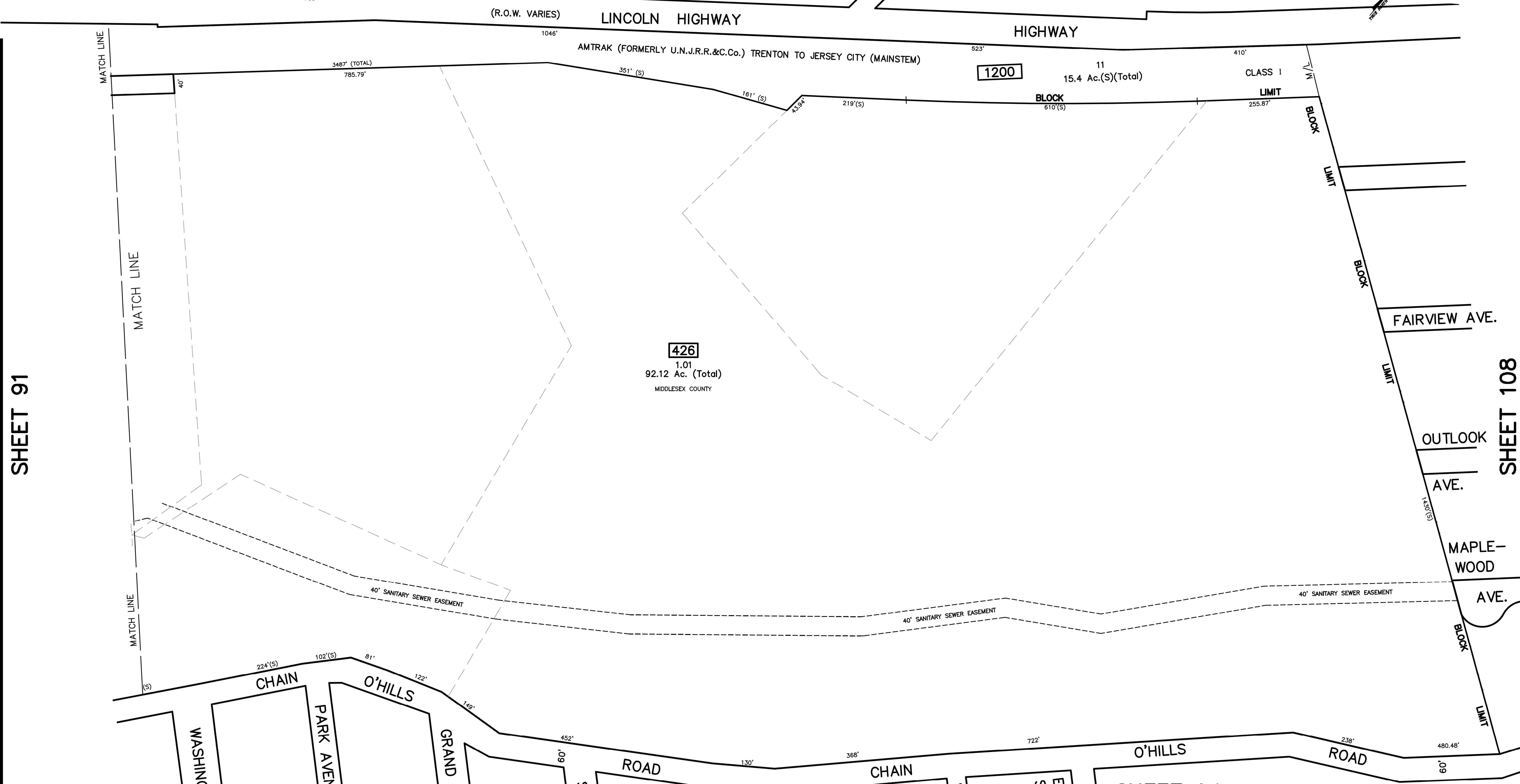
12/31/14 Tax Map Revisions  
 REVISED DESCRIPTION

SR  
 REV. BY CHK.



SHEET 91

SHEET 108



NOTE  
 PORTIONS OF THIS TAX MAP MAY HAVE BEEN PREPARED FROM  
 SCANNED OR DIGITIZED FILED MAPS AND/OR TAX MAPS.  
 ALL PORTIONS OF THIS TAX MAP HAVE BEEN PREPARED  
 ELECTRONICALLY IN AUTOCAD MAP 2000.

SHEET 92

SHEET 94

TAX MAP  
 WOODBRIDGE TOWNSHIP  
 MIDDLESEX COUNTY, NEW JERSEY  
 SCALE : 1"= 100' DATE : JUNE 2008  
 MICHAEL J. MCGURL, P.L.S.  
 CME ASSOCIATES  
 3141 BORDENTOWN AVENUE, PARLIN  
 NEW JERSEY, 08859